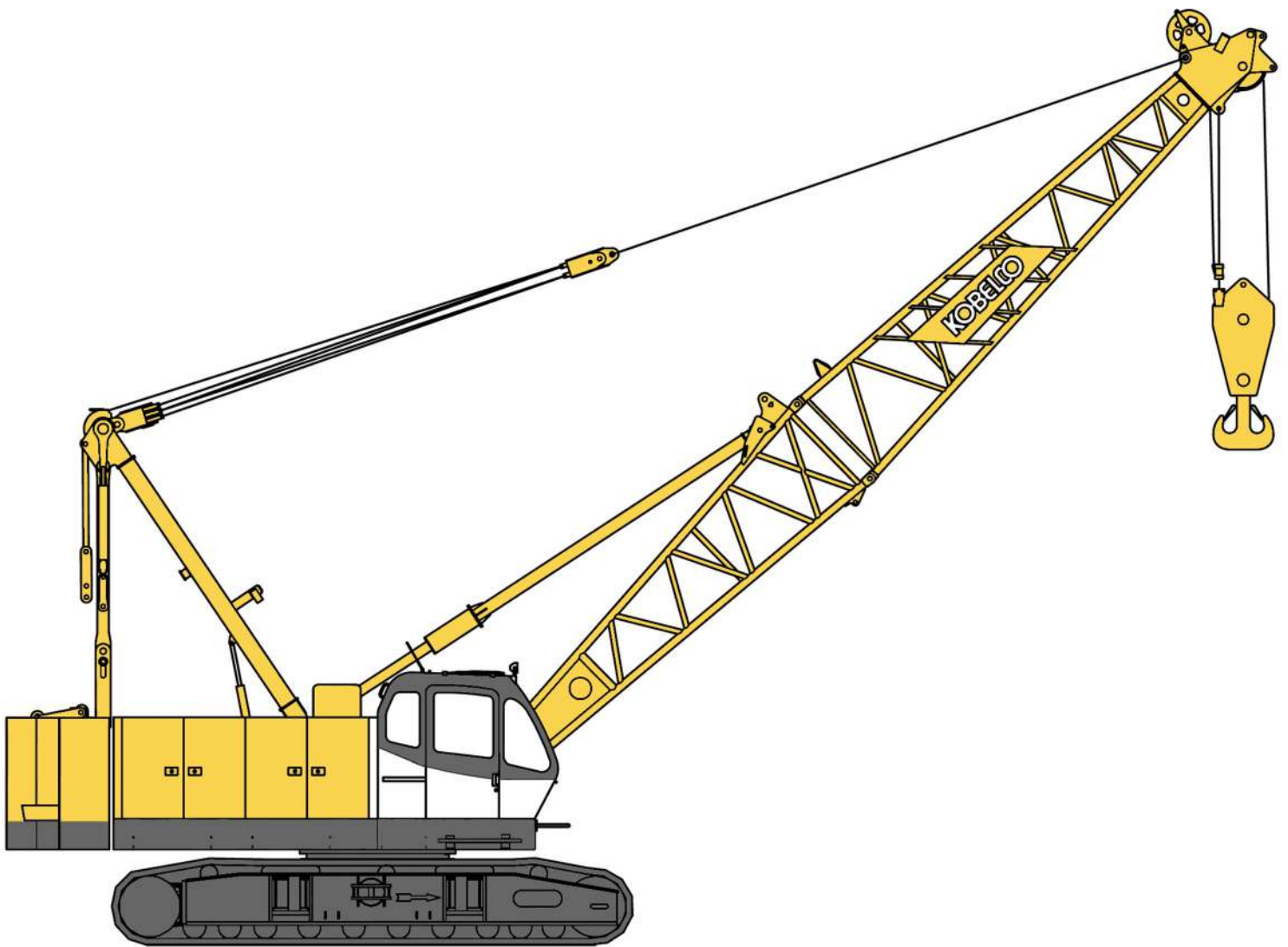


KOBELCO

CK850-III

HYDRAULIC CRAWLER CRANE



Max. Lift Capacity: 85 US Tons

Max. Boom Length: 200 ft

Max. Boom + Jib Length: 180 ft + 60 ft

SPECIFICATIONS FOR CK850-III CRAWLER CRANE

The Kobelco CK850-III Crawler Crane is designed from the ground up for reliable operation, convenient maintenance and easy transport. Please consult your Kobelco distributor for additional information regarding specifications, operating parameters and maintenance requirements.

1. GENERAL DESCRIPTION

| | |
|--------------------------------------|---|
| Type | Crawler mounted, fully revolving |
| Maximum lifting capacity | 170,000 lbs (77,100 kg) (at 11' operating radius, with 40' boom) |
| Basic boom length | 40' (12.2 m) |
| Maximum boom length | 200' (61.0 m) |
| Basic boom & jib length | 80' + 30' (24.4 m + 9.1 m) |
| Maximum boom & jib length | 180' + 60' (54.9 m + 18.3 m) |
| Working weight | Approx. 162,700 lbs (73,800 kg) |
| Ground bearing pressure | Approx. 11.2 psi (77.1 kPa) |
| Gradeability | 40 % |

Calculations to determine working weight, ground pressure and gradeability include the weight of the upper and lower works of the crane, counterweights and carbody weights, 40' boom and hook block.

2. GENERAL DIMENSIONS

| | |
|---|------------------|
| Height to top of gantry (lowered) | 10' 10" (3.3 m) |
| Width of upper machine with operator's cab | 10' 6" (3.20 m) |
| Radius of rear end (counterweight) | 14' 1" (4.28 m) |
| Counterweight ground clearance | 3' 7" (1.10 m) |
| Center of rotation to boom foot pin | 3' 7" (1.10 m) |
| Height from ground to boom foot pin | 5' 9" (1.75 m) |
| Height over gantry (raised) | 20' 3" (6.18 m) |
| Overall length of crawler | 19' 8" (5.99 m) |
| Center to center of tumblers | 16' 10" (5.13 m) |
| Overall width of crawlers | 16' 3" (4.94 m) |
| Shoe width | 36" (0.91 m) |
| Ground clearance of carbody | 15" (0.39 m) |

3. WORKING SPEED

| | |
|--|----------------------------------|
| Hoist line speed (front and rear drum) | 390 ~ 10 ft/min (120 ~ 3 m/min) |
| Lowering line speed (front and rear drum) | 390 ~ 10 ft/min (120 ~ 3 m/min) |
| Boom hoist line speed | 230 ~ 7 ft/min (70 ~ 2 m/min) |
| Boom lowering line speed | 230 ~ 7 ft/min (70 ~ 2 m/min) |
| Swing speed | 4.0 rpm (4.0 min ⁻¹) |

Travel speed (High / Low)

1.18 / 0.75 mph (1.9 / 1.2 km/hour)

Line speed based on single line, no load and first layer of rope on the drum. Line speed is controllable by Dial-type Speed Control System.

4. UPPER MACHINERY

4.1 Power plant

Diesel engine, make and model

Hino J08E-TM (Comply with EPA "Tier 3")

No. of cylinders 6

Bore X stroke 4-13/32" X 5-1/8" (112 mm X 130 mm)

Cycles 4

Total displacement 469 cu.in (7,684 cm³)

Rated output SAE GROSS

213 HP / 2,000 rpm (159 kW / 2,000 min⁻¹)

Maximum torque

588 lbs-ft / 1,600 rpm (797 Nm / 1,600 min⁻¹)

Starter 24 Volts / 5.0 kW

Alternator 24 Volts / 60 Amp

Batteries

Two 12 volt, 150 AH/20 HR capacity series connected.

Radiator

Corrugated type core, thermostatically controlled.

Throttle

Twist grip type hand throttle, electrically controlled.

Air cleaner Dry type with replaceable paper element.

Fuel tank capacity 106 US gal. (400 liters)

Lube oil filter

Full flow and by-pass type with spin off type cartridge.

Fuel filter Heavy duty with spin off type cartridge.

Approximate fuel consumption

0.342 lb / HP-hr (208 g / kW-hr)

10.53 US gal. / hr at 100 % HP

4.2 Hydraulic pumps

All driven from heavy duty pump drive.

Load hoist, boom hoist and propel

2 Piston pumps (252 ℓ/min x 2)

Swing

1 Piston pump (175 ℓ/min)

Control system and auxiliary

2 Gear pumps (61 ℓ/min x 40 ℓ/min)

Brake cooling system

2 Gear pumps (73 ℓ/min x 2)

Load hoist, boom hoist, and propel

2 Piston pumps, max flow rate 67 US gal./min x 2
(252 l/min x 2)

Swing

1 Piston pump, max flow rate 46 US gal./min
(175 l/min)

Control system and auxiliary

2 Gear pumps, max flow rate
16 US gal./min x 11 US gal (61 l/min x 40 l/min)

Brake cooling system

2 Gear pumps, max flow rate 19 US gal./min x 2
(73 l/min x 2)

4.3 Counterweight and carbody weight

Counterweight (A) 1 x 27,340 lbs (12,400 kg)

Counterweight (B) 1 x 27,560 lbs (12,500 kg)

Total weight 54,900 lbs (24,900 kg)

Carbody weight 2 x 7,360 lbs (3,340 kg)

Total weight 14,720 lbs (6,680 kg)

4.4 Gantry

This high folding type gantry is fitted with a sheave frame for boom hoist reeving. Hydraulic lift is standard. It provides full up, full down positions with linkage.

4.5 Operator's cab

Totally enclosed from weather, this full-vision cab has safety glass all around. The adjustable, high-backed seat with armrest is standard, allowing operators to customize the position. Auxiliary controls and instruments are on a side mounted console. A signal horn, windshield wipers, air conditioner are all standard features.

4.6 Controls

At operator's right are console-mounted adjustable levers for the front and rear drum and the boom hoist control. Beside the operator's seat on the right are two short levers for propel control, individual speed shifts for front drum, rear drum and boom drum. At the operator's left are the console mounted swing lever, knobs for front and rear drum, boom drum pawls, engine start / stop key. A swing brake control switch and signal horn button are on the swing lever.

4.7 Electric system

All wiring corded for easy serving, individual fused branch circuit.

4.8 Hydraulic system

Maximum pressure rating 4,620 psi (32.0 MPa)

Cooling Oil to air heat exchanger

Filtration

Full flow filters with replaceable paper elements

Reservoir capacity 116 US gal. (440 liters)

4.9 Boom hoist

Powered by hydraulic motor through planetary reducer.

Drum Single drum.

Grooved for 5/8" (16.0 mm) dia. wire rope.

Brake

A spring set, hydraulically-released, multiple-disc holding brake is mounted inside the boom hoist motor and is operated through a counter-balance valve. An external ratchet is fitted for locking the drum.

4.10 Front drum

Powered by hydraulic motor through planetary reducer.

Drum 21.7" (550 mm) P.C.D. X 21.5" (545 mm) LG.

Grooved for 7/8" (22 mm) dia. wire rope.

Brake

A spring set, hydraulically-released, multiple-disc holding brake is mounted inside the hoist motor and is operated through a counter-balance valve. An external ratchet is fitted for locking the drum.

Free-Fall (Standard)

Wet-type disk brake free-fall is mounted inside the drum.

4.11 Rear drum

Powered by hydraulic motor through planetary reducer.

Drum 21.7" (550 mm) P.C.D. X 21.5" (545 mm) LG.

Grooved for 7/8" (22 mm) dia. wire rope.

Brake

A spring set, hydraulically-released, multiple-disc holding brake is mounted inside the hoist motor and is operated through a counter-balance valve. An external ratchet is fitted for locking the drum.

Free-Fall (Standard)

Wet-type disk brake free-fall is mounted inside the drum.

4.12 Third drum (Optional)

Powered by hydraulic motor through planetary reducer.

Drum 21.7" (550 mm) P.C.D. X 21.5" (545 mm) LG.

Grooved for 7/8" (22.0 mm) dia. wire rope.

Brake

A spring set, hydraulically-released, multiple-disc holding brake is mounted inside the hoist motor and is operated through a counter-balance valve. An external ratchet is fitted for locking the drum.

Free-Fall (Standard for third drum)

Wet-type disk brake free-fall is mounted inside the drum.

4.13 Swing

Swing unit

Hydraulic motor driving through planetary reducer to output swing pinion for 360 degree rotation.

Swing brake

Spring set hydraulically released multiple disk brake mounted on swing motor.

Swing circle

Single row ball bearing with internal, integral swing gear.

Swing Lock 2 Position lock for transportation.

5. LOWER MACHINERY

5.1 Carbody

The durable carbody features steel welded construction with extendible axles.

5.2 Crawler

Crawler assemblies can be hydraulically extended for wide-track operation or retracted for transportation.

Crawler belt tension adjusted with hydraulic jack and maintained by shims between the idler block and frame.

5.3 Crawler drive

The independent hydraulic propel drive is built into each crawler side frame. Each drive consists of a hydraulic motor driving a propel sprocket through a planetary gear box. The hydraulic motor and gear box are built into the crawler side frame within the shoe width.

5.4 Crawler brakes

Spring set, hydraulically released, multiple disk-type parking brakes are built into each propel drive.

5.5 Steering mechanism

The hydraulic propel system provides both skid steering (driving one track only) and counter-rotating steering (driving each track in opposite direction).

5.6 Crawler shoes

63 shoes, 36" (914 mm) wide each crawler.

5.7 Track rollers

The track rollers are sealed for maintenance-free operation.

6. CRANE ATTACHMENTS

6.1 Crane boom

The welded lattice construction uses tubular, high-tension steel chords with pin connections between sections.

| | |
|----------------------------|---------------|
| Maximum boom length | 200' (61.0 m) |
| Basic boom length | 40' (12.2 m) |
| Boom base section | 19' (5.8 m) |
| Boom tip section | 21' (6.4 m) |

6.2 Boom insert (Optional)

An optional boom inserts is available to provide extension capabilities. It also has welded lattice construction with tubular, high-tension steel chords and pin connections.

Boom insert 10' (3.1 m), 20' (6.1 m), 40' (12.2 m)

6.3 Jib (Optional)

The optional jib employs welded lattice construction with tubular, high-tension steel chords with pin connections between sections.

| | |
|---------------------------|--------------|
| Maximum jib length | 60' (18.3 m) |
| Basic jib length | 30' (9.1 m) |
| Jib base section | 15' (4.6 m) |
| Jib tip section | 16' (4.9 m) |

Jib insert 10' (3.1 m), 20' (6.1 m)

Jib inserts are available to provide extension capabilities. They also have welded lattice construction with tubular, high-tension steel chords and pin connections.

Jib is extendible on booms of 80' (24.4 m) through 180' (54.9 m)

6.4 Auxiliary sheave (Optional)

Auxiliary sheave is extendible on booms of 40' (12.2 m) to 190' (57.9 m).

6.5 Boom hoist reeving

Twelve (12) parts of 5/8" (16.0 mm) dia. high strength wire rope.

6.6 Boom backstops

Telescopic type with spring bumper.

7. AUXILIARY EQUIPMENT

7.1 Lights

Two (2) Front flood lights

One (1) Cab inside light

7.2 Gauges and warning display

Gauges

One (1) Tachometer

One (1) Hour meter

One (1) Fuel gauge

One (1) Water temperature gauge for engine

Warning display

Battery charge

Engine oil pressure

Air cleaner

Engine oil filter

Control main pressure

Hydraulic oil temperature

7.3 Others

Air conditioner

Drum turn indicator (front and rear drum)

Foot acceleration pedal

Electric fuel pump

Counterweight self-removal device

8. SAFETY SERVICE

Function lock lever

Boom over hoist limit switch

Signal horn

Front and rear hoist drum lock

Swing alarm (buzzer and lamps)

Over load preventive device (Load Moment Indicator)

Hook over hoist shut off (Anti-two-block)

Boom angle indicator

Boom hoist drum lock

Swing lock

Boom backstops

9. TOOLS AND ACCESSORIES

A set of tools and accessories are furnished.

10. OPTIONAL EQUIPMENT

Hydraulic tagline

Travel kit

Third drum

Pillow plate for boom self-erection

Custom color

Catwalks

All specifications are subject to change without notice.

Winch Performance Data

Line speed and line pull based on Hino J08E-TM-0N at 2,000 rpm.

Line speed and line pull based on single line. Line pull is not based on wire rope strength.

Front & Rear Drum

| | | Line speed (ft/min) | | | | | | |
|------------------------------|--------|--------------------------------|-----|-----|-----------------------------------|-----|-----|-----------------|
| Layer | | 1 | 2 | 3 | 4 | 5 | 6 | 7 |
| Line Pull (lbs) | 0 | 394 | 420 | 446 | 472 | 499 | 525 | storage only |
| | 5,000 | 394 | 420 | 446 | 472 | 499 | 525 | |
| | 10,000 | 353 | 353 | 353 | 353 | 353 | 353 | |
| | 15,000 | 235 | 235 | 235 | 235 | 235 | 235 | |
| | 17,000 | 208 | 208 | 208 | 208 | 208 | 208 | |
| | 20,100 | 177 | 177 | 177 | 177 | 179 | 182 | |
| | 25,000 | 141 | 146 | 148 | 149 | 149 | | |
| | 32,000 | 115 | | | | | | |
| Storage Capacity (ft) | | 130 | 139 | 148 | 156 | 165 | 174 | 183 |
| Rated Line Pull = 17,000 lbs | | Maximum Line Pull = 32,000 lbs | | | Total Storage Capacity = 1,095 ft | | | |

Third Drum (Optional)

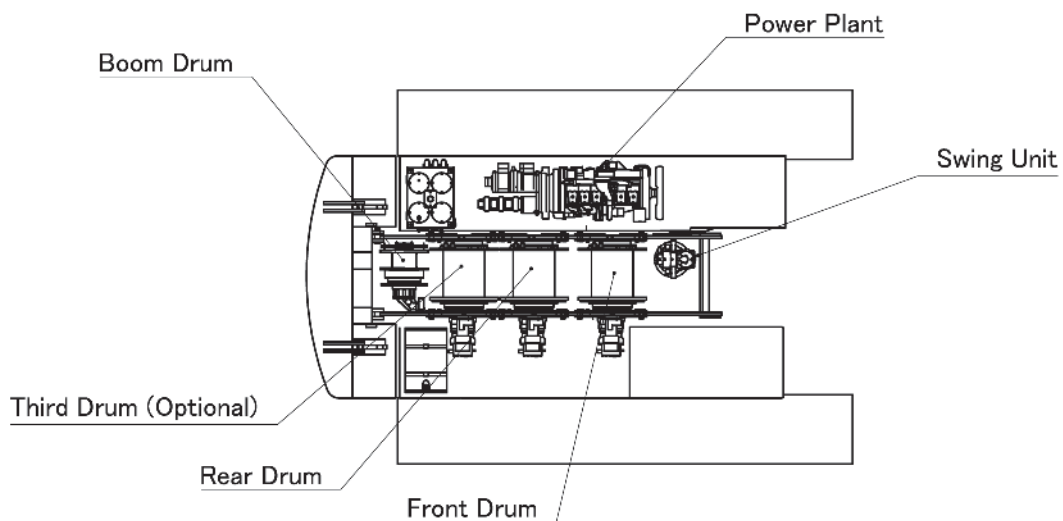
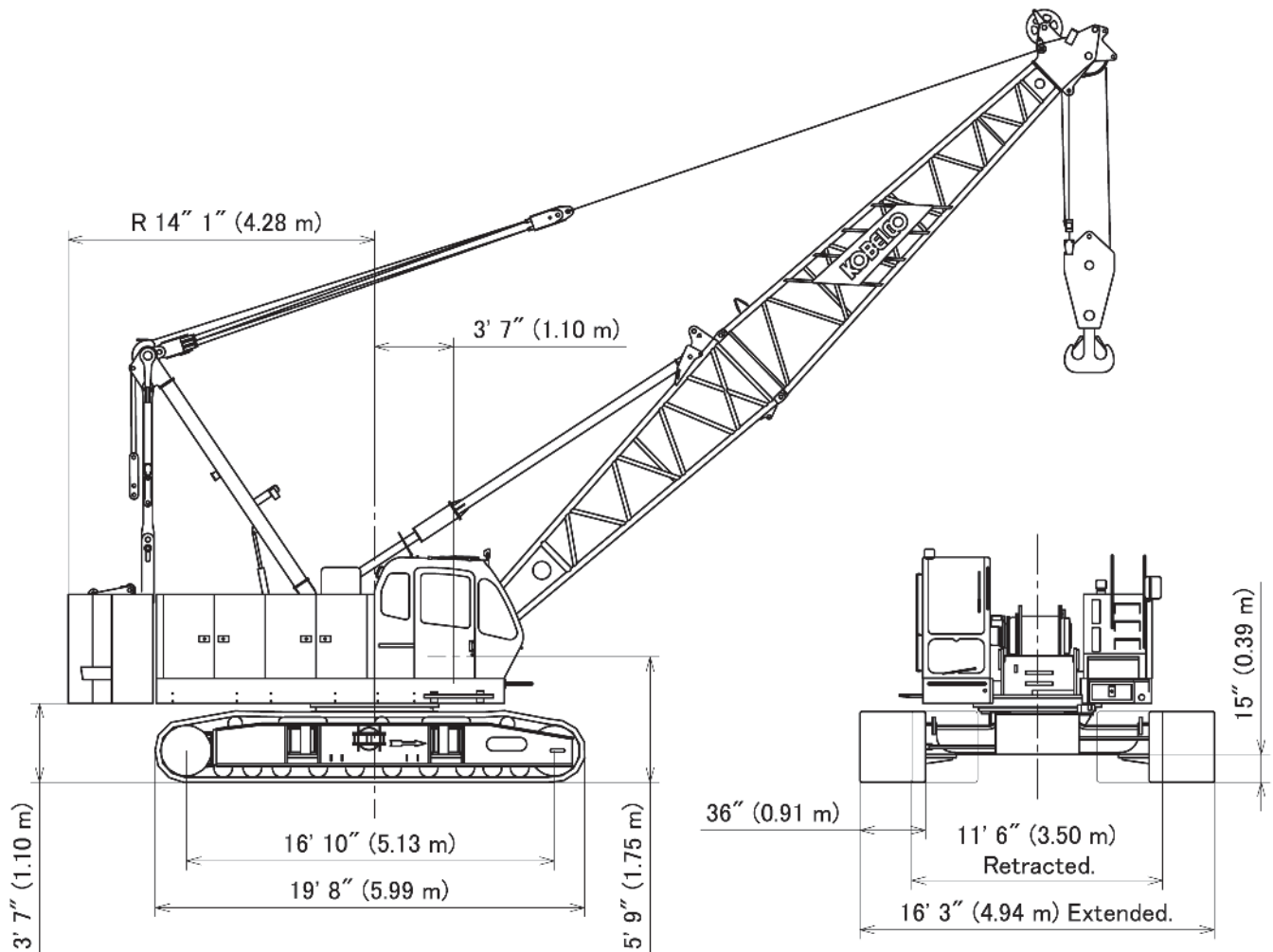
| | | Line speed (ft/min) | | | | | | |
|------------------------------|--------|--------------------------------|-----|-----|-----------------------------------|-----|-----|-----------------|
| Layer | | 1 | 2 | 3 | 4 | 5 | 6 | 7 |
| Line Pull (lbs) | 0 | 394 | 420 | 446 | 472 | 499 | 525 | storage only |
| | 5,000 | 394 | 420 | 446 | 472 | 499 | 525 | |
| | 10,000 | 353 | 353 | 353 | 353 | 353 | 353 | |
| | 15,000 | 235 | 235 | 235 | 235 | 235 | 235 | |
| | 17,000 | 208 | 208 | 208 | 208 | 208 | 208 | |
| | 20,100 | 177 | 177 | 177 | 177 | 179 | 182 | |
| | 25,000 | 141 | 146 | 148 | 149 | 149 | | |
| | 32,000 | 115 | | | | | | |
| Storage Capacity (ft) | | 130 | 139 | 148 | 156 | 165 | 174 | 183 |
| Rated Line Pull = 17,000 lbs | | Maximum Line Pull = 32,000 lbs | | | Total Storage Capacity = 1,095 ft | | | |

Wire Rope Specifications

| Use | Construction | No load diameter | Length | Safety Factor | Required minimum breaking strength |
|--------------------------|---|--|-----------------|---------------|------------------------------------|
| Front drum | 6 x 25 Filler IWRC Right hand lay, Regular lay | 0.887" to 0.904" (22.54 mm to 22.97 mm) | 869' (265 m) | 3.5: 1 | 59,500 lbs (26,990 kg) |
| Rear drum | 6 x 25 Filler IWRC Right hand lay, Regular lay | 0.887" to 0.904" (22.54 mm to 22.97 mm) | 673' (205 m) | 3.5: 1 | 59,500 lbs (26,990 kg) |
| Third drum (Optional) | 6 x 25 Filler IWRC Right hand lay, Regular lay | 0.887" to 0.904" (22.54 mm to 22.97 mm) | 869' (265 m) | 3.5: 1 | 59,500 lbs (26,990 kg) |
| Boom drum | 6 x 31 Warrington seal Right hand lay, Regular lay | 0.639" to 0.653" (16.24 mm to 16.58 mm) | 492' (150 m) | 3.5: 1 | 47,180 lbs (21,400 kg) |

CK850-III General Dimensions

KOBELCO



CK850-III Dimensions and Weight

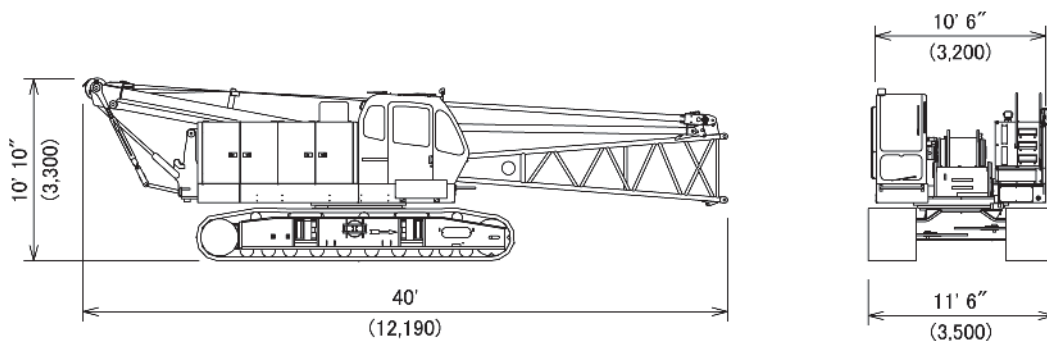
KOBELCO

Base Machine -1

Weight: 89,980 lbs (40,820 kg)

Boom base, Gantry, Crawler, Wire ropes (Front, Rear and Boom hoist drums)

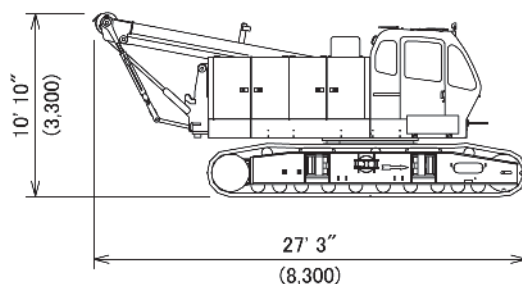
When installing optional third drum,
add 4,260 lbs (1,930 kg)



Base Machine -2

Weight: 85,350 lbs (38,700 kg)

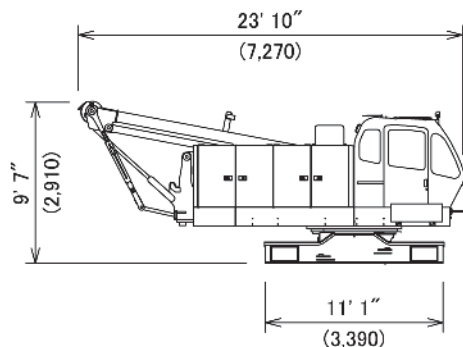
Gantry, Crawler, Wire ropes (Front, Rear and Boom hoist drums)



Base Machine -3

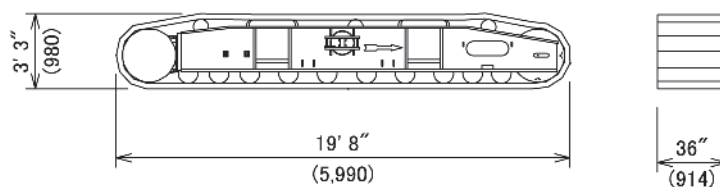
Weight: 52,500 lbs (23,800 kg)

Gantry, Wire ropes (Front, Rear and Boom hoist drums)



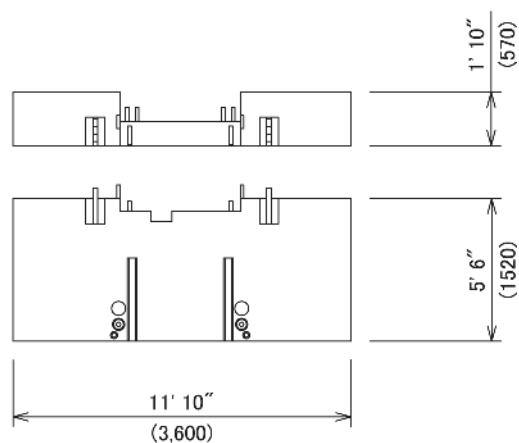
Crawler

Weight: 16,320 lbs (7,400 kg)



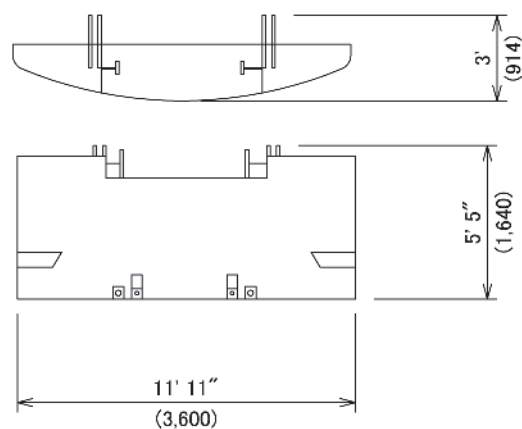
Counterweight (A)

Weight: 27,340 lbs (12,400 kg)



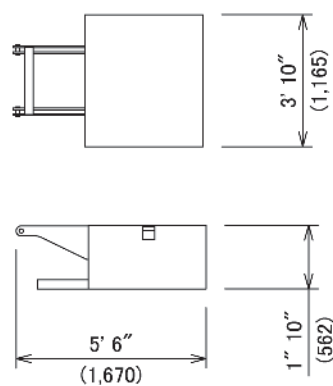
Counterweight (B)

Weight: 27,560 lbs (12,500 kg)



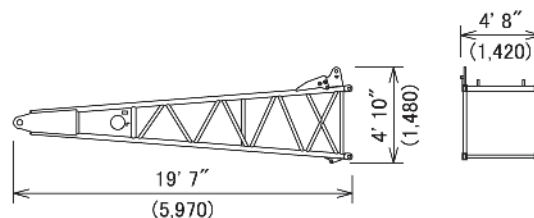
Carbody Weight

Weight: 7,360 lbs (3,340 kg)



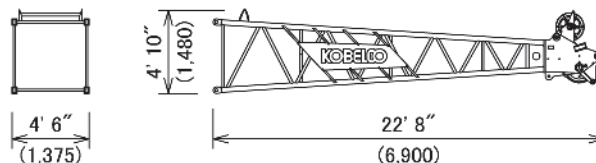
Boom Base

Weight: 2,230 lbs (1,010 kg)



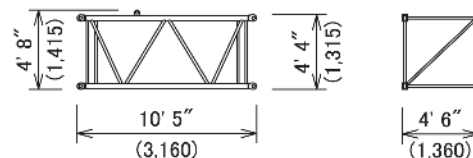
Boom Tip

Weight: 2,380 lbs (1,080 kg)
Includes cable roller and guy lines.



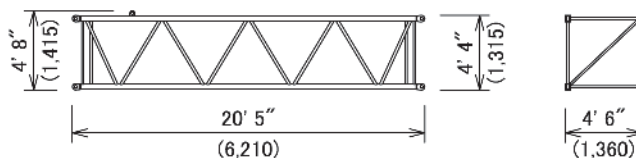
10 ft (3.0 m) Insert Boom

Weight: 750 lbs (340 kg)
Includes cable roller and guy lines.



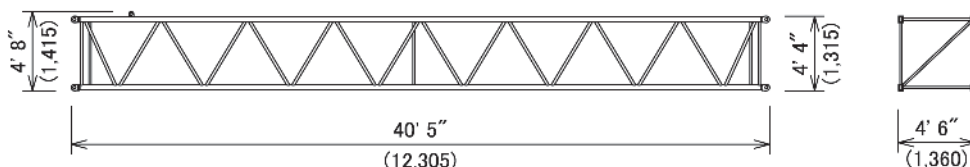
20 ft (6.1 m) Insert Boom

Weight: 1,230 lbs (560 kg)
Includes cable roller and guy lines.



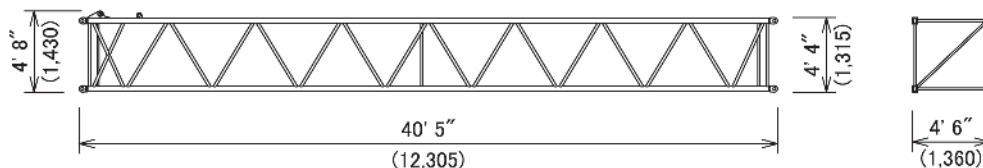
40 ft (12.2 m) Insert Boom

Weight: 2,190 lbs (990 kg)
Includes cable roller and guy lines.



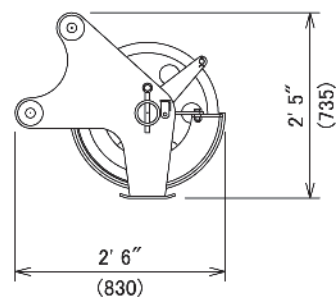
40 ft (12.2 m) Insert Boom (with lug)

Weight: 2,220 lbs (1,010 kg)
Includes cable roller and guy lines.



Auxiliary Sheave

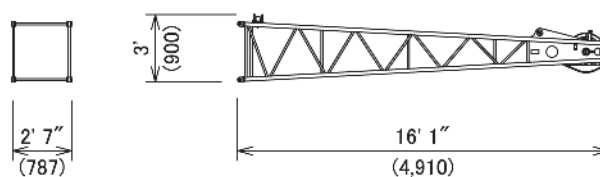
Weight: 320 lbs (145 kg)



Jib Tip

Weight: 620 lbs (280 kg)

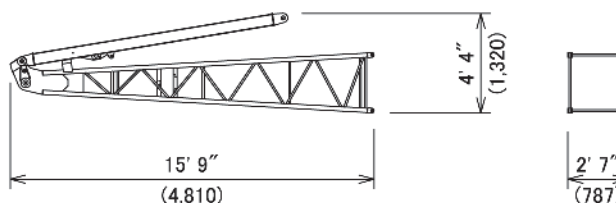
Includes cable roller.



Jib Base and Strut

Weight: 1,210 lbs (550 kg)

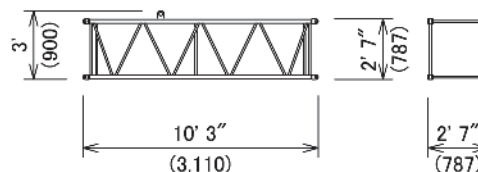
Includes guy line.



10 ft (3.0 m) Insert Jib

Weight: 290 lbs (130 kg)

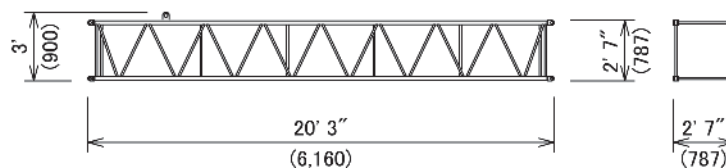
Includes cable roller and guy line.



20 ft (6.1 m) Jib Insert

Weight: 490 lbs (220 kg)

Includes cable roller and guy line.



Shipping plan for 200 ft Boom and 60 ft Jib

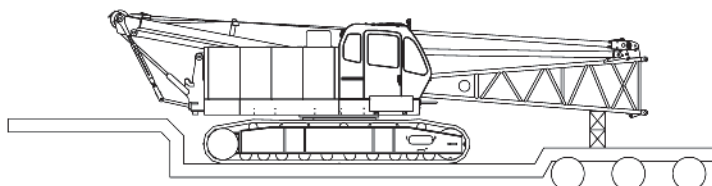
| Description of Item | Weight | | Trailer Loads | | | |
|---|--------|-------------|--------------------|--------------------|--------------------|------------------|
| | lbs | (kg) | #1 | #2 | #3 | #4 |
| Base Machine with Boom Base and Crawlers* | 89,980 | (40,820) | 1 | | | |
| Counterweight (A) | 27,340 | (12,400) | | 1 | | |
| Counterweight (B) | 27,560 | (12,500) | | | 1 | |
| Carbody Weight | 7,360 | (3,340) | | 1 | 1 | |
| 10 ft Insert Boom and Guy Line | 750 | (340) | | 1 | 1 | |
| 20 ft Inser Boom and Guy Line | 1,230 | (560) | | | | 1 |
| 40 ft Insert Boom and Guy Line | 2,190 | (990) | | 1 | 1 | |
| 40 ft Insert Boom (w/ Lug) and Guy Line | 2,220 | (1,010) | | | | 1 |
| Boom Tip and Guy Line | 2,380 | (1,080) | | | | 1 |
| Jib Base and Guy Line | 1,210 | (550) | | 1 | | |
| 10 ft Inser Jib and Guy Line | 290 | (130) | | 1 | | |
| 20 ft Insert Jib and Guy Line | 490 | (220) | | 1 | | |
| Jib Tip | 620 | (280) | | 1 | | |
| Approx. Total Shipping Weight | | lbs (kg) | 89,980 (40,820) | 40,250 (18,250) | 37,860 (17,170) | 5,830 (2,650) |

* Third drum is not included.

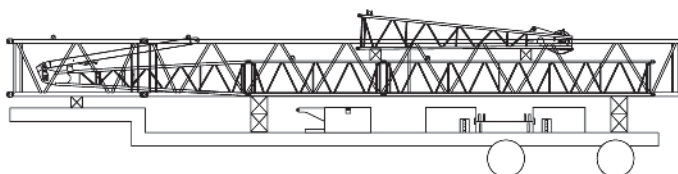
Loads for transportation were targeted at 45,000 lbs, 8' 6" wide, 48' long and 13' 6" high from ground.

This may vary depending on truck/trailer weight, style of trailer and state law.

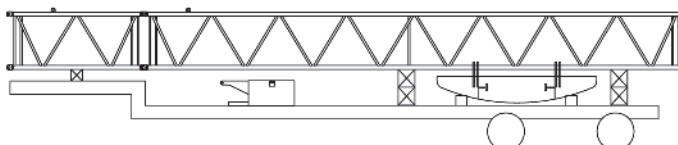
Trailer #1



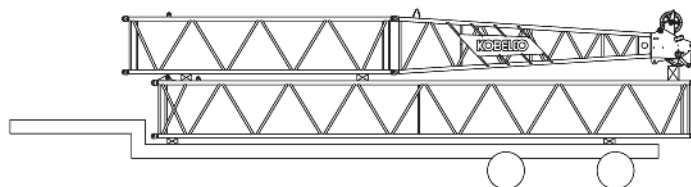
Trailer #2



Trailer #3

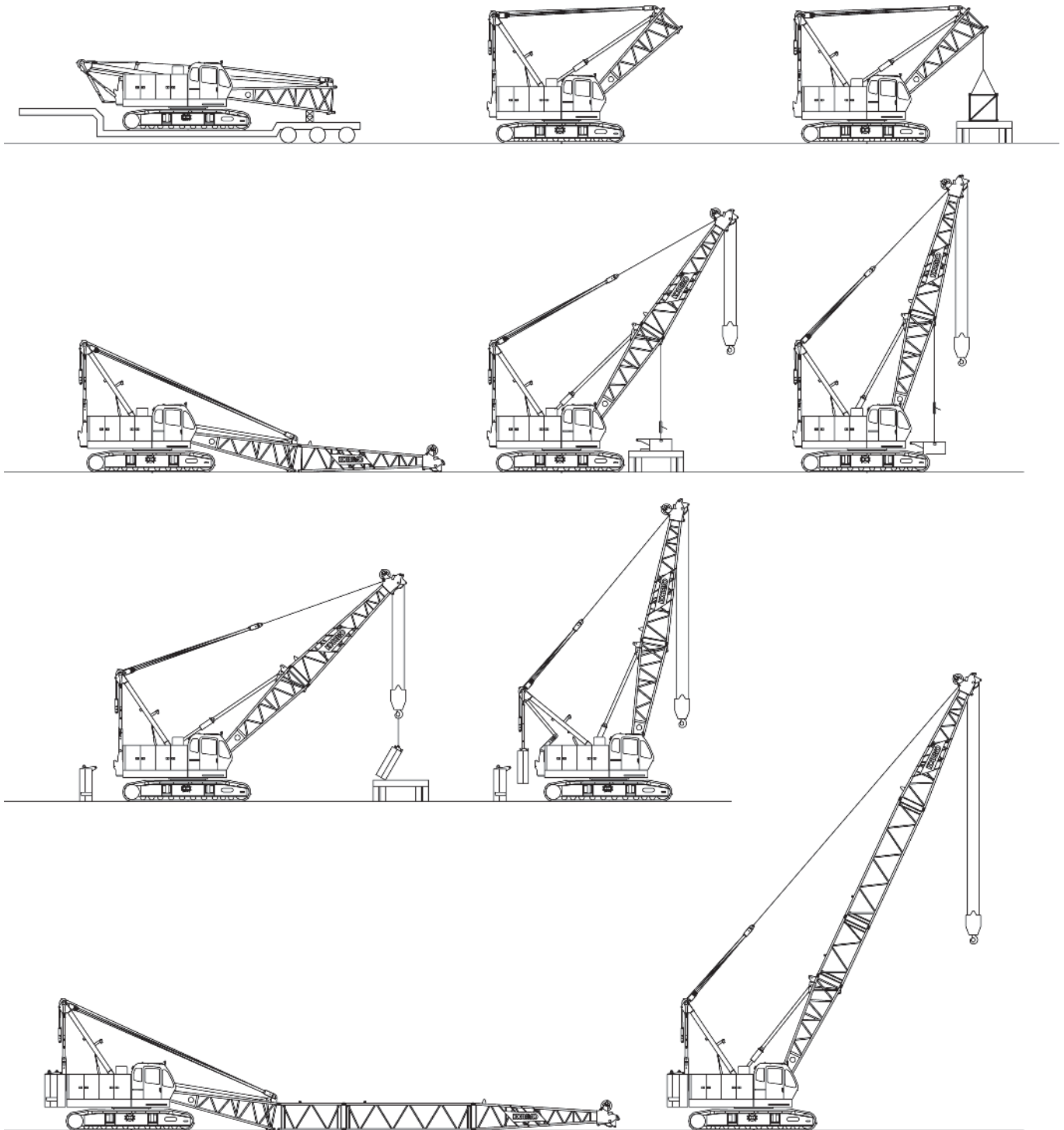


Trailer #4



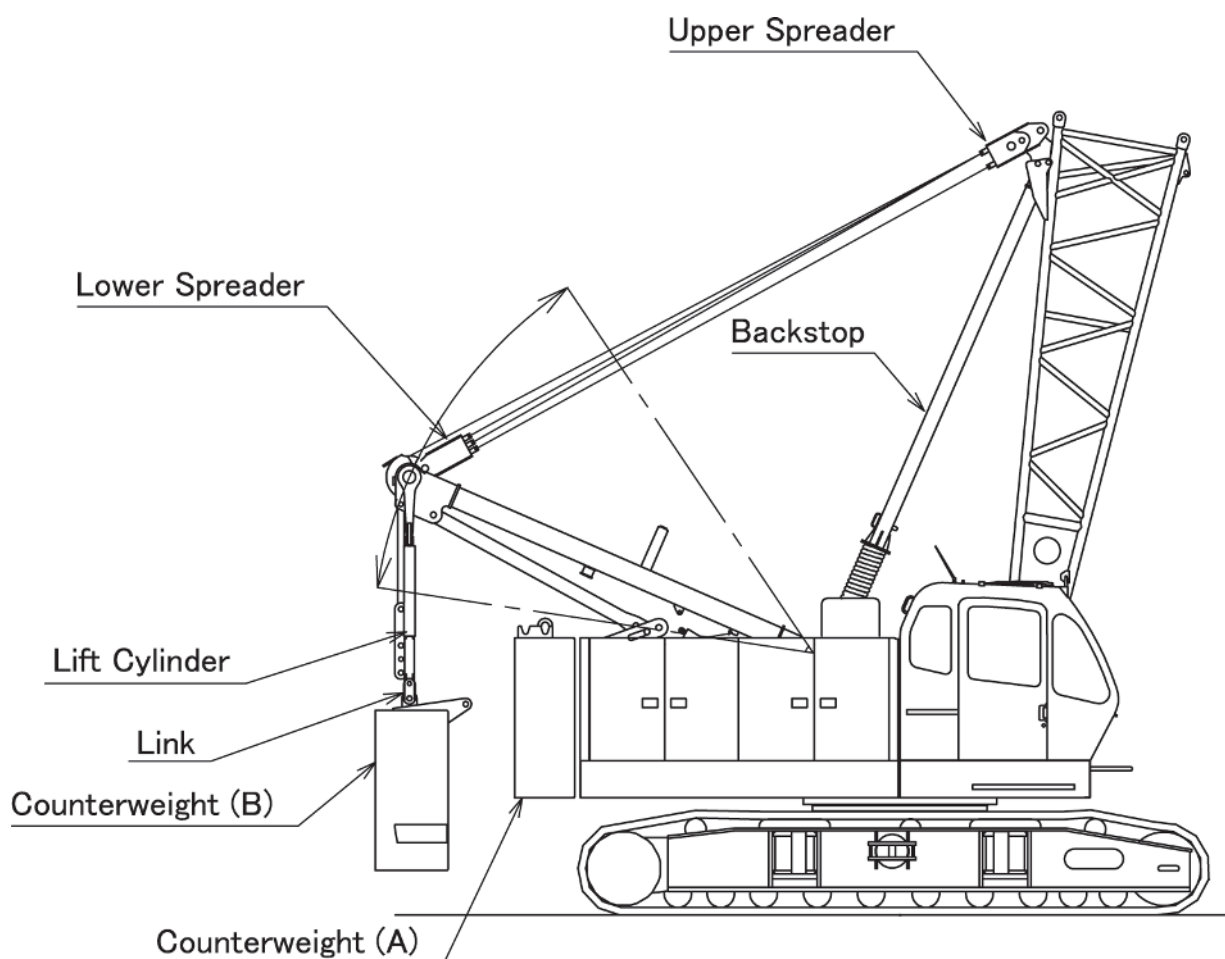
CK850-III Self Assembly Procedure

KOBELCO



CK850-III Counterweight Self-Removal Device **KOBELCO**

(Standard equipment)



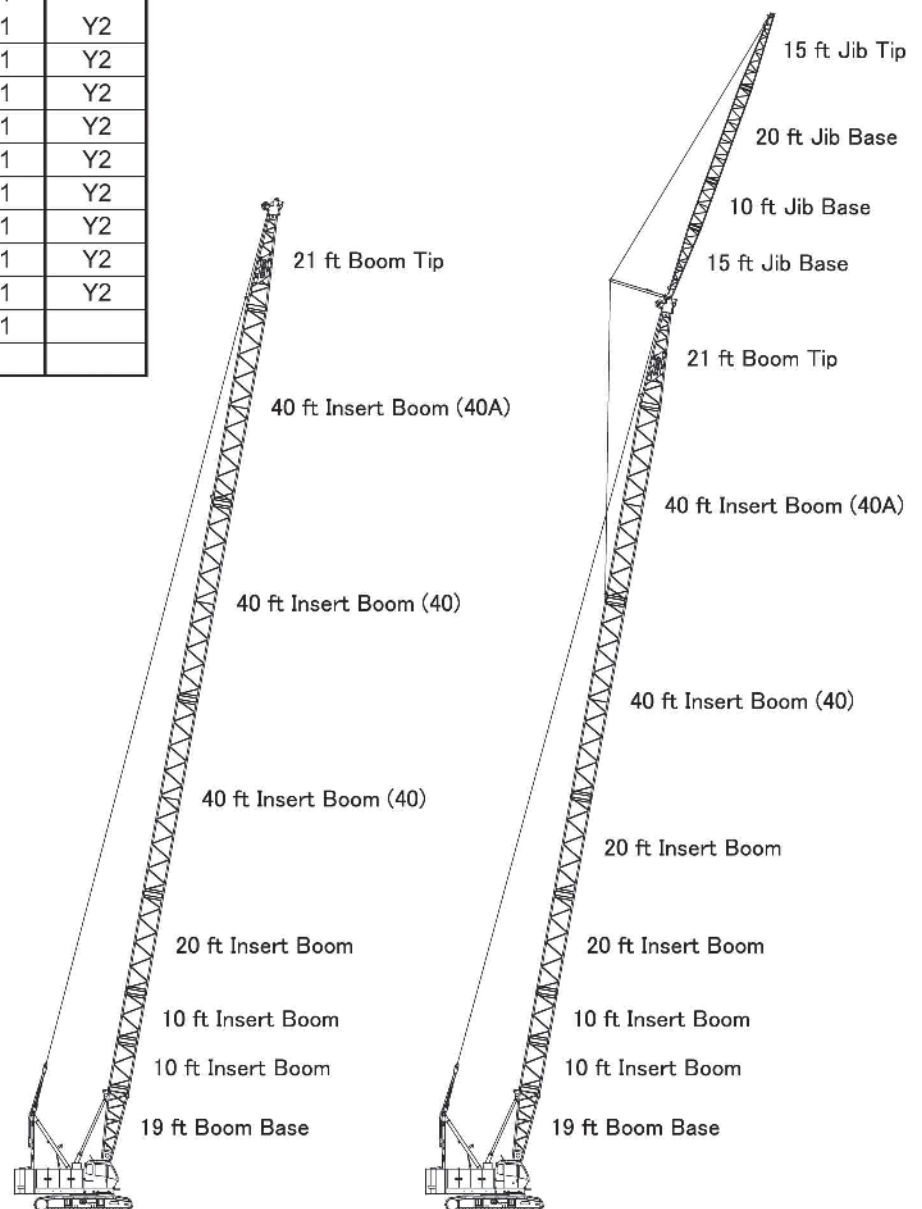
Boom Arrangement

| Boom | Insert Boom | | | | Aux. Sheave | Fixed Jib |
|--------|-------------|-------|-----------|-------------|-------------|-----------|
| | 10 ft | 20 ft | 40ft (40) | 40 ft (40A) | | |
| 40 ft | — | — | — | — | Y1 | |
| 50 ft | 1 | — | — | — | Y1 | |
| 60 ft | 2 | — | — | — | Y1 | |
| 70 ft | 1 | 1 | — | — | Y1 | |
| 80 ft | 2 | 1 | — | — | Y1 | Y2 |
| | — | — | — | 1 | Y1 | |
| 90 ft | 1 | 2 | — | — | Y1 | Y2 |
| | 1 | — | — | 1 | Y1 | |
| 100 ft | 2 | 2 | — | — | Y1 | Y2 |
| | 2 | — | — | 1 | Y1 | |
| 110 ft | 1 | 1 | — | 1 | Y1 | Y2 |
| 120 ft | 2 | 1 | — | 1 | Y1 | Y2 |
| 130 ft | 1 | 2 | — | 1 | Y1 | Y2 |
| 140 ft | 2 | 2 | — | 1 | Y1 | Y2 |
| 150 ft | 1 | 1 | 1 | 1 | Y1 | Y2 |
| 160 ft | 2 | 1 | 1 | 1 | Y1 | Y2 |
| 170 ft | 1 | 2 | 1 | 1 | Y1 | Y2 |
| 180 ft | 2 | 2 | 1 | 1 | Y1 | Y2 |
| 190 ft | 1 | 1 | 2 | 1 | Y1 | |
| 200 ft | 2 | 1 | 2 | 1 | | |

Y1: Auxiliary sheave can be attached.
 Y2: Fixed jib can be attached.
 To install fixed jib, one 40A (40 ft insert boom with lug) is required.

Jib Arrangement

| Jib | Insert Jib | |
|-------|------------|-------|
| | 10 ft | 20 ft |
| 30 ft | — | — |
| 40 ft | 1 | — |
| 50 ft | — | 1 |
| 60 ft | 1 | 1 |

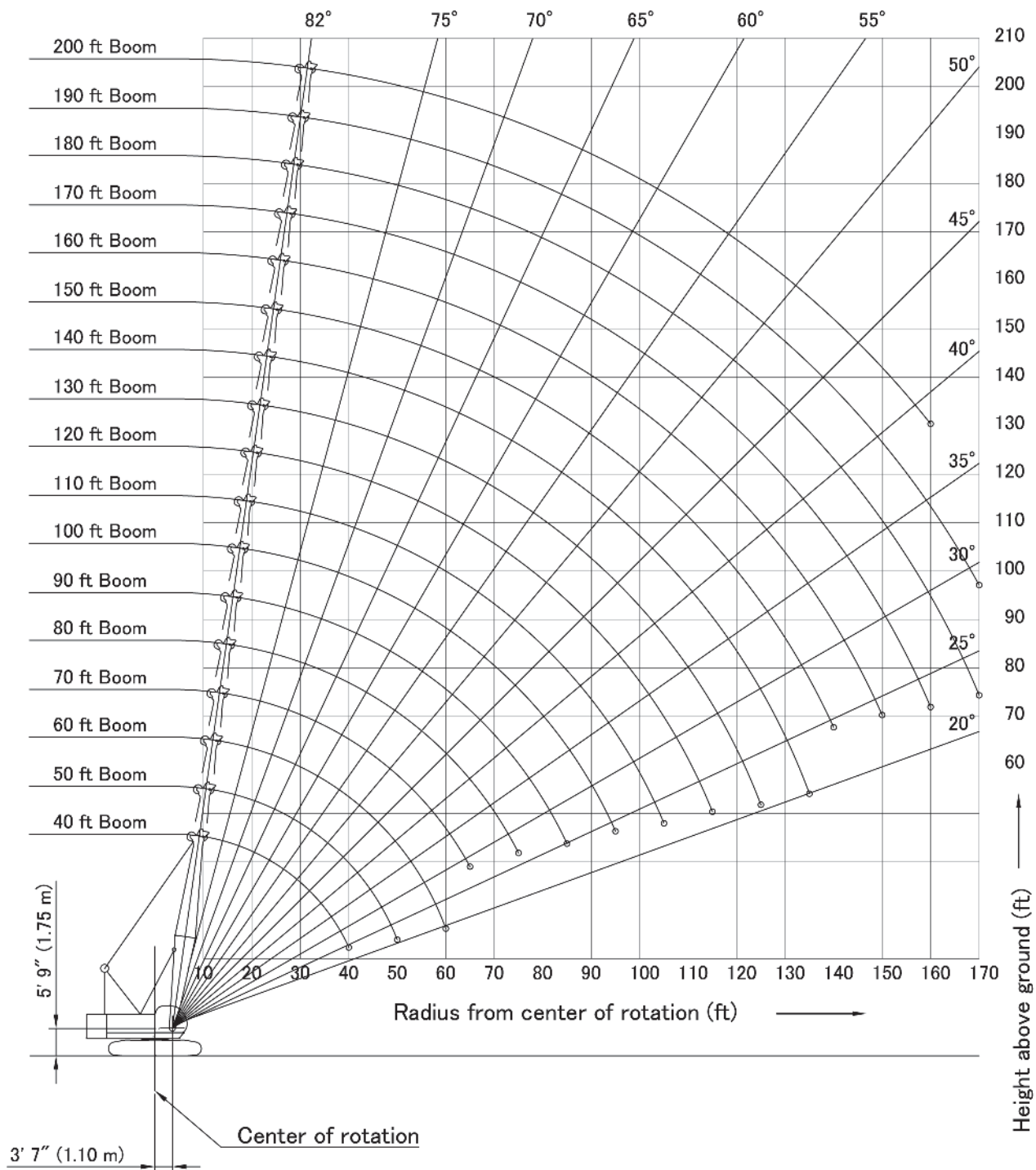


200 ft (61.0 m) Main Boom

180 ft (54.9 m) Main Boom
and 60 ft (18.3 m) Fixed Jib

CK850-III Main Boom Working Range

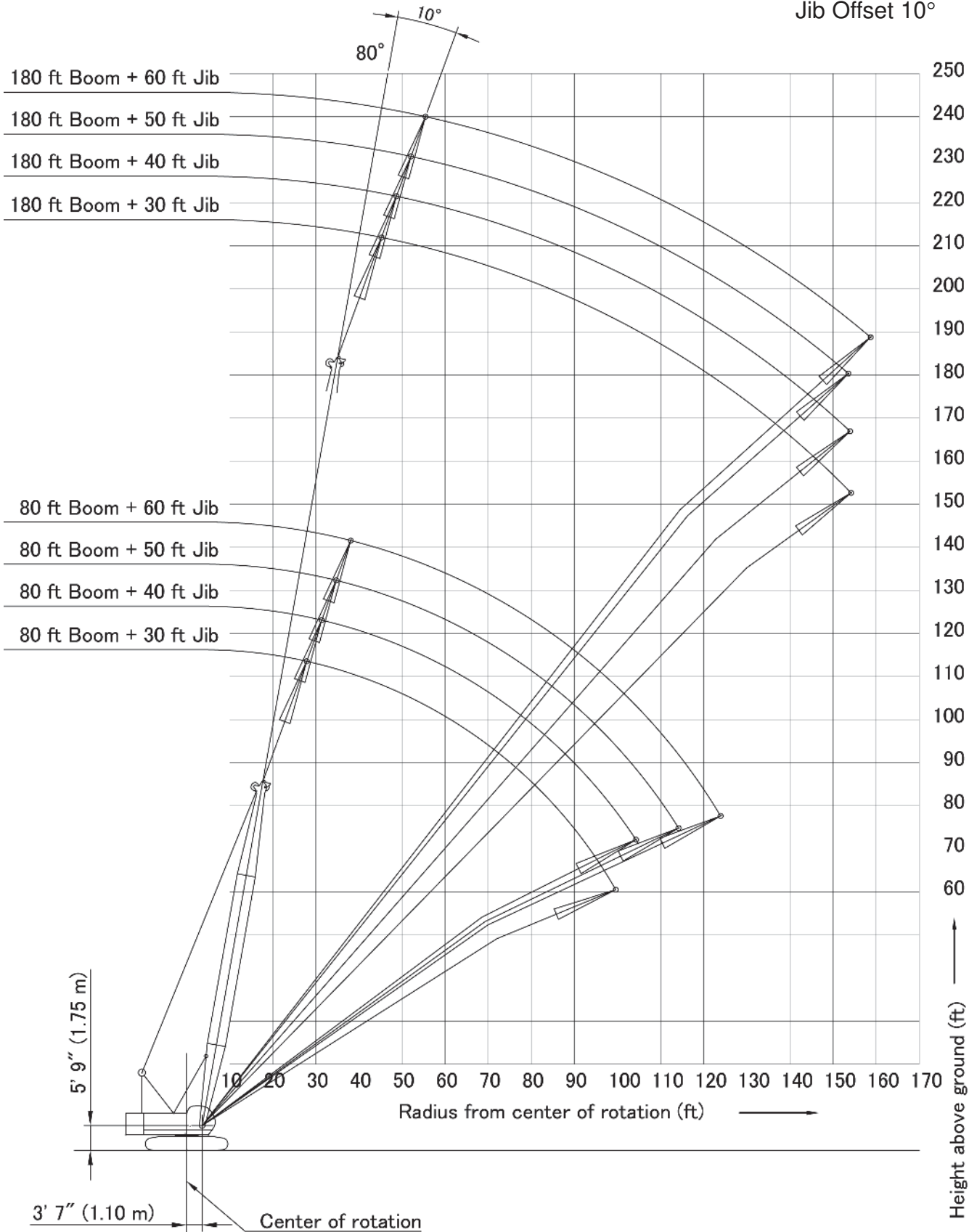
KOBELCO



CK850-III Jib Working Range

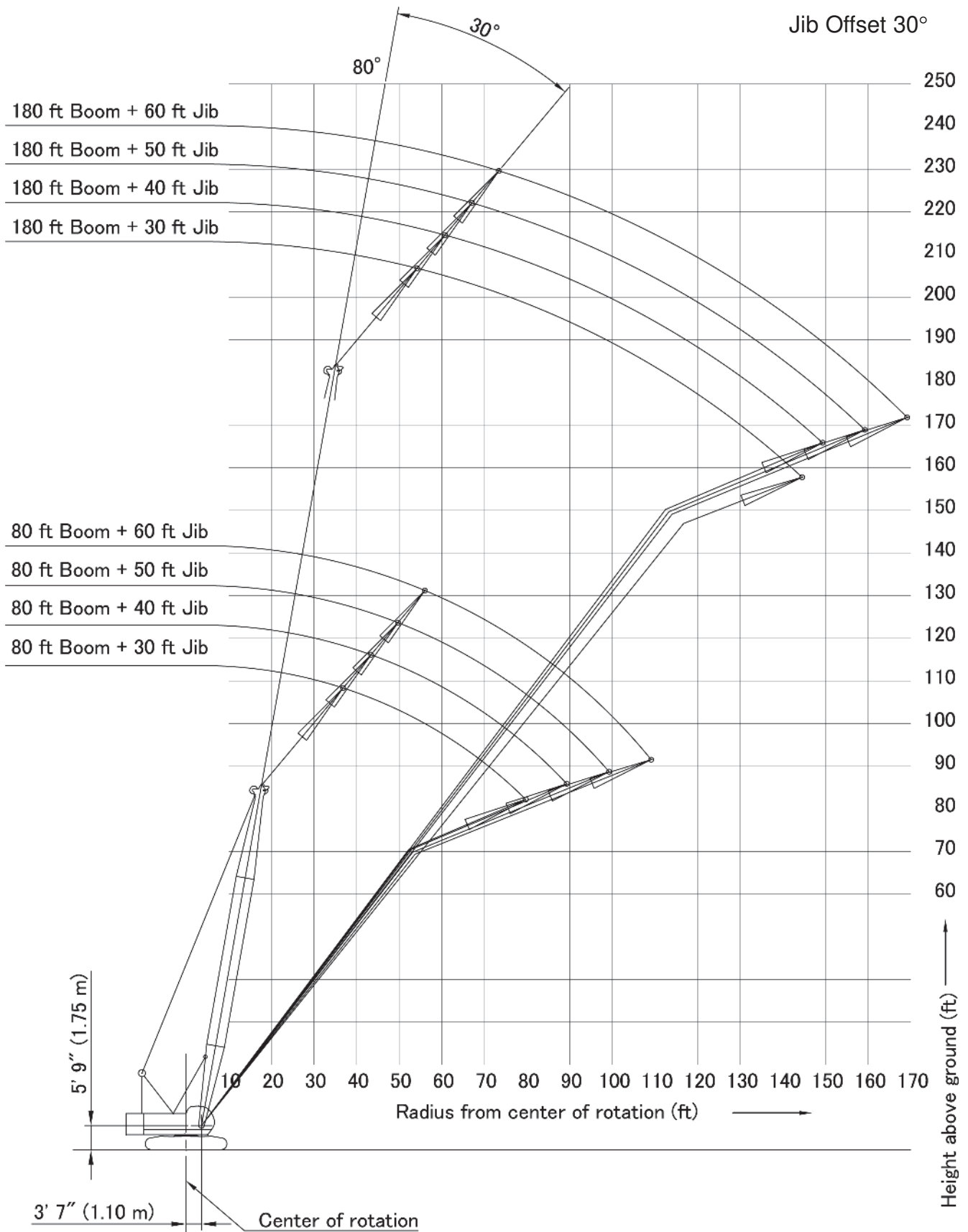
KOBELCO

Jib Offset 10°



CK850-III Jib Working Range

KOBELCO



KOBELCO CK850-III Main Boom Rated Loads in Pounds

Counterweight: 54,900 lbs (24,900 kg)

Carbody weight: 14,720 lbs (6,680 kg)

Supplemental Data

- Rated loads included in the charts are the maximum allowable freely suspended loads at a given boom length, boom angle and load radius, and have been determined for the machine standing level on firm supporting surface under ideal operating conditions. The user must limit or de-rate rated loads to allow for adverse conditions (such as soft or uneven ground, out-of-level conditions, wind, side loads, pendulum action, jerking or sudden stopping of loads, inexperience of personnel, multiple machine lifts, and traveling with a load).
- Rated loads do not exceed 75% of minimum tipping loads. Rated loads based on factors other than machine stability such as structural competence are shown by asterisk * in the charts.
- The machine must be reeved and set-up as stated in the operation manual and all the instruction manuals if these manuals are missing, obtain replacements.
 - The crane must be leveled to within 1% on a firm supporting surface.
 - Boom backstops are required for all boom length.
 - Gantry must be fully raised position for all operations.
 - Crawlers must be fully extended and be locked in position.
 - Counterweight: 54,900 lbs
 - Carbody weight: 14,720 lbs
- Do not attempt to lift where no radius on load is listed as crane may tip or collapse.
- Attempting to lift more than rated loads may cause machine to tip or collapse. Do not tip machine to determine rated loads.
- Weight of hooks, hook blocks, slings and other lifting devices are a part of the total load. Their total weight must be subtracted from the rated load to obtain the weight that can be lifted.
- When lifting over boom point with jib or auxiliary sheave, rated loads for the boom must be deducted as shown below.

| Jib Length | Aux Sheave | 30 ft | 40 ft | 50 ft | 60 ft |
|--------------|------------|-------|-------|-------|-------|
| Deduct (lbs) | 320 | 2,400 | 3,200 | 4,200 | 5,200 |

- The total load that can be lifted by jib is limited by rated jib loads.

- Boom lengths for jib mounting are 80 ft (24.4 m) to 180 ft (54.9 m)
- The total load that can be lifted by the auxiliary sheave is: the rated load for the boom (without auxiliary sheave installed) minus 320 lbs; however, the auxiliary sheave rated load should not exceed 17,000 lbs.
- Permissible boom lengths for installing auxiliary sheave are from 40 ft (12.2 m) to 190 ft (57.9 m).
- The boom should be erected over the front of the crawlers, not laterally.
- Least stable position is over the side.
- Maximum hoist load for number of reeving parts of line for hoist rope.

Main Load for Main Boom

| No. of Parts of line | 1 | 2 | 3 | 4 | 5 |
|----------------------|--------|--------|--------|--------|--------|
| Maximum Loads (lbs) | 17,000 | 34,000 | 51,000 | 68,000 | 85,000 |

| No. of Parts of line | 6 | 7 | 8 | 9 | 10 |
|----------------------|---------|---------|---------|---------|---------|
| Maximum Loads (lbs) | 102,000 | 119,000 | 136,000 | 153,000 | 170,000 |

Main Load for Fixed Jib

| No. of Parts of line | 1 | 2 |
|----------------------|--------|--------|
| Maximum Loads (lbs) | 17,000 | 24,000 |

Main Load for Auxiliary Sheave

| No. of Parts of line | 1 |
|----------------------|--------|
| Maximum Loads (lbs) | 17,000 |

- Rated loads listed apply only to the machine as originally manufactured and designed by KOBELCO CRANES CO., LTD. Modifications to this machine or use of equipment other than that specified can reduce operating capacity.
- Designed and rated to comply with ANSI Code B30.5.

Operation of this equipment in excess of rated loads or disregard of instruction voids the warranty

CK850-III Main Boom Rated Loads in Pounds

2 Counterweights + 2 Low Weights - Crawlers fully extended

| 40' Boom | | | 50' Boom | | | 60' Boom | | |
|------------------|-------------------|-----------------------|------------------|-------------------|-----------------------|------------------|-------------------|-----------------------|
| Load Radius (ft) | Boom Angle (deg.) | 360° Rated Load (lbs) | Load Radius (ft) | Boom Angle (deg.) | 360° Rated Load (lbs) | Load Radius (ft) | Boom Angle (deg.) | 360° Rated Load (lbs) |
| 10.0 | 81.7 | 170,000 * | 12.0 | 81.1 | 166,400 * | 13.0 | 81.6 | 154,200 * |
| 11.0 | 80.3 | 170,000 * | 13.0 | 79.9 | 154,400 * | 14.0 | 80.7 | 143,800 * |
| 12.0 | 78.8 | 166,600 * | 14.0 | 78.8 | 144,000 * | 15.0 | 79.7 | 134,700 * |
| 13.0 | 77.4 | 154,600 * | 15.0 | 77.6 | 134,900 * | 16.0 | 78.7 | 126,700 * |
| 14.0 | 75.9 | 144,200 * | 16.0 | 76.4 | 126,900 * | 17.0 | 77.7 | 119,500 * |
| 15.0 | 74.4 | 135,100 * | 17.0 | 75.2 | 119,700 * | 18.0 | 76.8 | 113,000 * |
| 16.0 | 72.9 | 127,100 * | 18.0 | 74.0 | 113,200 * | 19.0 | 75.8 | 105,460 |
| 17.0 | 71.4 | 119,900 * | 19.0 | 72.8 | 105,660 | 20.0 | 74.8 | 97,130 |
| 18.0 | 69.9 | 113,400 * | 20.0 | 71.6 | 97,350 | 22.0 | 72.8 | 83,790 |
| 19.0 | 68.3 | 105,820 | 22.0 | 69.2 | 84,010 | 24.0 | 70.8 | 73,560 |
| 20.0 | 66.7 | 97,500 | 24.0 | 66.7 | 73,810 | 26.0 | 68.7 | 65,490 |
| 22.0 | 63.6 | 84,190 | 26.0 | 64.2 | 65,760 | 28.0 | 66.6 | 58,970 |
| 24.0 | 60.3 | 74,000 | 28.0 | 61.6 | 59,230 | 30.0 | 64.5 | 53,570 |
| 26.0 | 56.9 | 65,980 | 30.0 | 58.9 | 53,850 | 32.0 | 62.4 | 49,030 |
| 28.0 | 53.4 | 59,480 | 32.0 | 56.2 | 49,310 | 34.0 | 60.2 | 45,170 |
| 30.0 | 49.7 | 54,100 | 34.0 | 53.3 | 45,480 | 36.0 | 58.0 | 41,840 |
| 32.0 | 45.7 | 49,580 | 36.0 | 50.4 | 42,150 | 38.0 | 55.7 | 38,950 |
| 34.0 | 41.5 | 45,740 | 38.0 | 47.3 | 39,280 | 40.0 | 53.3 | 36,410 |
| 36.0 | 36.9 | 42,460 | 40.0 | 44.1 | 36,750 | 45.0 | 47.0 | 31,230 |
| 38.0 | 31.6 | 39,590 | 45.0 | 34.9 | 31,590 | 50.0 | 40.0 | 27,290 |
| 40.0 | 25.5 | 34,830 * | 50.0 | 22.7 | 26,890 * | 55.0 | 31.7 | 24,200 |
| | | | | | | 60.0 | 20.6 | 21,600 * |

| 70' Boom | | | 80' Boom | | | 90' Boom | | |
|------------------|-------------------|-----------------------|------------------|-------------------|-----------------------|------------------|-------------------|-----------------------|
| Load Radius (ft) | Boom Angle (deg.) | 360° Rated Load (lbs) | Load Radius (ft) | Boom Angle (deg.) | 360° Rated Load (lbs) | Load Radius (ft) | Boom Angle (deg.) | 360° Rated Load (lbs) |
| 14.0 | 82.0 | 143,600 * | 16.0 | 81.6 | 126,300 * | 17.0 | 81.9 | 118,820 * |
| 15.0 | 81.2 | 134,500 * | 17.0 | 80.8 | 119,100 * | 18.0 | 81.2 | 112,400 * |
| 16.0 | 80.3 | 126,500 * | 18.0 | 80.1 | 112,600 * | 19.0 | 80.6 | 105,220 |
| 17.0 | 79.5 | 119,300 * | 19.0 | 79.4 | 105,290 | 20.0 | 79.9 | 96,870 |
| 18.0 | 78.7 | 112,800 * | 20.0 | 78.6 | 96,930 | 22.0 | 78.6 | 83,480 |
| 19.0 | 77.8 | 105,400 | 22.0 | 77.2 | 83,550 | 24.0 | 77.3 | 73,230 |
| 20.0 | 77.0 | 97,060 | 24.0 | 75.7 | 73,320 | 26.0 | 76.0 | 65,140 |
| 22.0 | 75.3 | 83,700 | 26.0 | 74.2 | 65,230 | 28.0 | 74.7 | 58,570 |
| 24.0 | 73.6 | 73,470 | 28.0 | 72.7 | 58,680 | 30.0 | 73.4 | 53,150 |
| 26.0 | 71.9 | 65,380 | 30.0 | 71.2 | 53,260 | 32.0 | 72.0 | 48,580 |
| 28.0 | 70.1 | 58,840 | 32.0 | 69.7 | 48,690 | 34.0 | 70.7 | 44,700 |
| 30.0 | 68.4 | 53,430 | 34.0 | 68.1 | 44,840 | 36.0 | 69.3 | 41,380 |
| 32.0 | 66.6 | 48,890 | 36.0 | 66.6 | 41,490 | 38.0 | 68.0 | 38,440 |
| 34.0 | 64.8 | 45,030 | 38.0 | 65.0 | 38,580 | 40.0 | 66.6 | 35,890 |
| 36.0 | 63.0 | 41,680 | 40.0 | 63.4 | 36,020 | 45.0 | 63.0 | 30,660 |
| 38.0 | 61.1 | 38,800 | 45.0 | 59.3 | 30,820 | 50.0 | 59.4 | 26,670 |
| 40.0 | 59.2 | 36,240 | 50.0 | 55.0 | 26,820 | 55.0 | 55.6 | 23,520 |
| 45.0 | 54.3 | 31,040 | 55.0 | 50.5 | 23,670 | 60.0 | 51.6 | 20,960 |
| 50.0 | 49.0 | 27,070 | 60.0 | 45.6 | 21,140 | 65.0 | 47.4 | 18,870 |
| 55.0 | 43.3 | 23,960 | 65.0 | 40.3 | 19,060 | 70.0 | 42.9 | 17,100 |
| 60.0 | 36.9 | 21,450 | 70.0 | 34.4 | 17,350 | 75.0 | 37.9 | 15,630 |
| 65.0 | 29.3 | 19,420 | 75.0 | 27.3 | 15,890 | 80.0 | 32.3 | 14,370 |
| | | | | | | 85.0 | 25.7 | 13,310 |

CK850-III Main Boom Rated Loads in Pounds

2 Counterweights + 2 Low Weights - Crawlers fully extended

| 100' Boom | | | 110' Boom | | | 120' Boom | | |
|------------------|-------------------|-----------------------|------------------|-------------------|-----------------------|------------------|-------------------|-----------------------|
| Load Radius (ft) | Boom Angle (deg.) | 360° Rated Load (lbs) | Load Radius (ft) | Boom Angle (deg.) | 360° Rated Load (lbs) | Load Radius (ft) | Boom Angle (deg.) | 360° Rated Load (lbs) |
| 19.0 | 81.5 | 101,850 * | 20.0 | 81.8 | 92,590 * | 22.0 | 81.5 | 80,680 * |
| 20.0 | 80.9 | 96,800 | 22.0 | 80.7 | 83,260 | 24.0 | 80.5 | 72,950 |
| 22.0 | 79.8 | 83,400 | 24.0 | 79.7 | 73,010 | 26.0 | 79.6 | 64,810 |
| 24.0 | 78.6 | 73,120 | 26.0 | 78.6 | 64,900 | 28.0 | 78.6 | 58,240 |
| 26.0 | 77.4 | 65,010 | 28.0 | 77.5 | 58,330 | 30.0 | 77.6 | 52,800 |
| 28.0 | 76.3 | 58,440 | 30.0 | 76.5 | 52,880 | 32.0 | 76.6 | 48,230 |
| 30.0 | 75.1 | 53,020 | 32.0 | 75.4 | 48,320 | 34.0 | 75.6 | 44,330 |
| 32.0 | 73.9 | 48,450 | 34.0 | 74.3 | 44,440 | 36.0 | 74.7 | 40,980 |
| 34.0 | 72.7 | 44,550 | 36.0 | 73.2 | 41,090 | 38.0 | 73.7 | 38,050 |
| 36.0 | 71.5 | 41,200 | 38.0 | 72.1 | 38,160 | 40.0 | 72.7 | 35,470 |
| 38.0 | 70.3 | 38,290 | 40.0 | 71.0 | 35,600 | 45.0 | 70.1 | 30,220 |
| 40.0 | 69.0 | 35,730 | 45.0 | 68.2 | 30,350 | 50.0 | 67.6 | 26,210 |
| 45.0 | 65.9 | 30,480 | 50.0 | 65.4 | 26,340 | 55.0 | 65.0 | 23,010 |
| 50.0 | 62.7 | 26,470 | 55.0 | 62.5 | 23,170 | 60.0 | 62.3 | 20,450 |
| 55.0 | 59.5 | 23,320 | 60.0 | 59.5 | 20,610 | 65.0 | 59.5 | 18,320 |
| 60.0 | 56.1 | 20,740 | 65.0 | 56.4 | 18,490 | 70.0 | 56.7 | 16,530 |
| 65.0 | 52.5 | 18,620 | 70.0 | 53.2 | 16,710 | 75.0 | 53.8 | 15,010 |
| 70.0 | 48.8 | 16,860 | 75.0 | 49.9 | 15,210 | 80.0 | 50.8 | 13,710 |
| 75.0 | 44.8 | 15,360 | 80.0 | 46.4 | 13,910 | 85.0 | 47.6 | 12,580 |
| 80.0 | 40.6 | 14,080 | 85.0 | 42.6 | 12,800 | 90.0 | 44.3 | 11,590 |
| 85.0 | 35.9 | 12,980 | 90.0 | 38.6 | 11,830 | 95.0 | 40.7 | 10,730 |
| 90.0 | 30.6 | 12,010 | 95.0 | 34.2 | 10,970 | 100.0 | 36.9 | 9,960 |
| 95.0 | 24.3 | 11,190 | 100.0 | 29.2 | 10,250 | 105.0 | 32.7 | 9,280 |
| | | | 105.0 | 23.2 | 9,610 | 110.0 | 27.9 | 8,680 |
| | | | | | | 115.0 | 22.2 | 8,170 |

| 130' Boom | | | 140' Boom | | | 150' Boom | | |
|------------------|-------------------|-----------------------|------------------|-------------------|-----------------------|------------------|-------------------|-----------------------|
| Load Radius (ft) | Boom Angle (deg.) | 360° Rated Load (lbs) | Load Radius (ft) | Boom Angle (deg.) | 360° Rated Load (lbs) | Load Radius (ft) | Boom Angle (deg.) | 360° Rated Load (lbs) |
| 24.0 | 81.3 | 71,200 * | 24.0 | 81.9 | 61,720 * | 26.0 | 81.7 | 52,680 * |
| 26.0 | 80.4 | 64,610 | 26.0 | 81.1 | 60,840 * | 28.0 | 80.9 | 51,800 * |
| 28.0 | 79.5 | 58,020 | 28.0 | 80.2 | 57,980 | 30.0 | 80.1 | 51,140 * |
| 30.0 | 78.6 | 52,570 | 30.0 | 79.4 | 52,530 | 32.0 | 79.3 | 47,810 |
| 32.0 | 77.7 | 48,010 | 32.0 | 78.6 | 47,950 | 34.0 | 78.6 | 43,890 |
| 34.0 | 76.8 | 44,110 | 34.0 | 77.7 | 44,040 | 36.0 | 77.8 | 40,540 |
| 36.0 | 75.9 | 40,760 | 36.0 | 76.9 | 40,670 | 38.0 | 77.0 | 37,610 |
| 38.0 | 74.9 | 37,830 | 38.0 | 76.0 | 37,740 | 40.0 | 76.2 | 35,030 |
| 40.0 | 74.0 | 35,250 | 40.0 | 75.2 | 35,160 | 45.0 | 74.2 | 29,760 |
| 45.0 | 71.7 | 30,000 | 45.0 | 73.1 | 29,910 | 50.0 | 72.2 | 25,720 |
| 50.0 | 69.4 | 25,970 | 50.0 | 70.9 | 25,880 | 55.0 | 70.2 | 22,530 |
| 55.0 | 67.0 | 22,790 | 55.0 | 68.7 | 22,680 | 60.0 | 68.2 | 19,950 |
| 60.0 | 64.6 | 20,210 | 60.0 | 66.5 | 20,100 | 65.0 | 66.1 | 17,810 |
| 65.0 | 62.1 | 18,070 | 65.0 | 64.3 | 17,960 | 70.0 | 64.0 | 16,000 |
| 70.0 | 59.6 | 16,290 | 70.0 | 62.0 | 16,150 | 75.0 | 61.8 | 14,480 |
| 75.0 | 57.0 | 14,770 | 75.0 | 59.6 | 14,630 | 80.0 | 59.6 | 13,160 |
| 80.0 | 54.3 | 13,470 | 80.0 | 57.2 | 13,310 | 85.0 | 57.4 | 12,010 |
| 85.0 | 51.5 | 12,320 | 85.0 | 54.7 | 12,160 | 90.0 | 55.1 | 11,000 |
| 90.0 | 48.6 | 11,330 | 90.0 | 52.2 | 11,170 | 95.0 | 52.7 | 10,110 |
| 95.0 | 45.6 | 10,440 | 95.0 | 49.5 | 10,290 | 100.0 | 50.3 | 9,320 |
| 100.0 | 42.4 | 9,670 | 100.0 | 46.8 | 9,500 | 105.0 | 47.7 | 8,640 |
| 105.0 | 39.0 | 8,990 | 105.0 | 43.9 | 8,790 | 110.0 | 45.1 | 8,000 |
| 110.0 | 35.4 | 8,390 | 110.0 | 40.8 | 8,170 | 115.0 | 42.3 | 7,420 |
| 115.0 | 31.3 | 7,840 | 115.0 | 37.5 | 7,620 | 120.0 | 39.4 | 6,920 |
| 120.0 | 26.7 | 7,360 | 120.0 | 34.0 | 7,120 | 125.0 | 36.2 | 6,450 |
| 125.0 | 21.2 | 6,940 | 125.0 | 30.1 | 6,650 | 130.0 | 32.8 | 6,040 |
| | | | 130.0 | 25.7 | 6,260 | 135.0 | 29.1 | 5,660 |
| | | | 135.0 | 20.5 | 5,900 | 140.0 | 24.8 | 5,330 |

CK850-III Main Boom Rated Loads in Pounds

2 Counterweights + 2 Low Weights - Crawlers fully extended

| 160' Boom | | | 170' Boom | | | 180' Boom | | |
|------------------|-------------------|-----------------------|------------------|-------------------|-----------------------|------------------|-------------------|-----------------------|
| Load Radius (ft) | Boom Angle (deg.) | 360° Rated Load (lbs) | Load Radius (ft) | Boom Angle (deg.) | 360° Rated Load (lbs) | Load Radius (ft) | Boom Angle (deg.) | 360° Rated Load (lbs) |
| 28.0 | 81.5 | 44,090 * | 28.0 | 82.0 | 38,800 * | 30.0 | 81.8 | 33,730 * |
| 30.0 | 80.7 | 43,430 * | 30.0 | 81.3 | 38,130 * | 32.0 | 81.1 | 33,060 * |
| 32.0 | 80.0 | 42,760 * | 32.0 | 80.6 | 37,470 * | 34.0 | 80.5 | 32,620 * |
| 34.0 | 79.3 | 42,100 * | 34.0 | 79.9 | 37,030 * | 36.0 | 79.8 | 31,960 * |
| 36.0 | 78.6 | 40,520 * | 36.0 | 79.2 | 36,370 * | 38.0 | 79.2 | 31,520 * |
| 38.0 | 77.8 | 37,560 | 38.0 | 78.6 | 35,710 * | 40.0 | 78.5 | 31,080 * |
| 40.0 | 77.1 | 34,980 | 40.0 | 77.9 | 34,780 | 45.0 | 76.9 | 29,250 |
| 45.0 | 75.2 | 29,710 | 45.0 | 76.1 | 29,510 | 50.0 | 75.3 | 25,220 |
| 50.0 | 73.4 | 25,680 | 50.0 | 74.4 | 25,460 | 55.0 | 73.6 | 22,000 |
| 55.0 | 71.5 | 22,480 | 55.0 | 72.6 | 22,260 | 60.0 | 72.0 | 19,400 |
| 60.0 | 69.6 | 19,880 | 60.0 | 70.9 | 19,660 | 65.0 | 70.3 | 17,260 |
| 65.0 | 67.7 | 17,720 | 65.0 | 69.1 | 17,520 | 70.0 | 68.6 | 15,450 |
| 70.0 | 65.7 | 15,930 | 70.0 | 67.2 | 15,710 | 75.0 | 66.8 | 13,910 |
| 75.0 | 63.7 | 14,390 | 75.0 | 65.4 | 14,170 | 80.0 | 65.1 | 12,560 |
| 80.0 | 61.7 | 13,070 | 80.0 | 63.5 | 12,850 | 85.0 | 63.3 | 11,410 |
| 85.0 | 59.7 | 11,920 | 85.0 | 61.6 | 11,680 | 90.0 | 61.5 | 10,400 |
| 90.0 | 57.6 | 10,910 | 90.0 | 59.7 | 10,670 | 95.0 | 59.7 | 9,500 |
| 95.0 | 55.4 | 10,000 | 95.0 | 57.7 | 9,780 | 100.0 | 57.8 | 8,700 |
| 100.0 | 53.2 | 9,210 | 100.0 | 55.7 | 8,990 | 105.0 | 55.9 | 8,000 |
| 105.0 | 50.9 | 8,500 | 105.0 | 53.6 | 8,260 | 110.0 | 54.0 | 7,340 |
| 110.0 | 48.6 | 7,870 | 110.0 | 51.5 | 7,620 | 115.0 | 52.0 | 6,760 |
| 115.0 | 46.1 | 7,290 | 115.0 | 49.3 | 7,050 | 120.0 | 49.9 | 6,230 |
| 120.0 | 43.6 | 6,760 | 120.0 | 47.0 | 6,520 | 125.0 | 47.8 | 5,700 |
| 125.0 | 40.9 | 6,280 | 125.0 | 44.7 | 6,040 | 130.0 | 45.6 | 5,220 |
| 130.0 | 38.1 | 5,860 | 130.0 | 42.2 | 5,570 | 135.0 | 43.3 | 4,780 |
| 135.0 | 35.0 | 5,440 | 135.0 | 39.6 | 5,150 | 140.0 | 40.9 | 4,380 |
| 140.0 | 31.8 | 5,070 | 140.0 | 36.9 | 4,760 | 145.0 | 38.4 | 4,030 |
| 145.0 | 28.1 | 4,710 | 145.0 | 34.0 | 4,380 | 150.0 | 35.8 | 3,680 |
| 150.0 | 24.0 | 4,380 | 150.0 | 30.8 | 4,050 | 155.0 | 33.0 | 3,370 |
| | | | 155.0 | 27.3 | 3,760 | 160.0 | 29.9 | 3,100 |
| | | | 160.0 | 23.3 | 3,500 | 165.0 | 26.5 | 2,840 |
| | | | | | | 170.0 | 22.6 | 2,620 |

| 190' Boom | | | 190' Boom | | | 200' Boom | | |
|------------------|-------------------|-----------------------|------------------|-------------------|-----------------------|------------------|-------------------|-----------------------|
| Load Radius (ft) | Boom Angle (deg.) | 360° Rated Load (lbs) | Load Radius (ft) | Boom Angle (deg.) | 360° Rated Load (lbs) | Load Radius (ft) | Boom Angle (deg.) | 360° Rated Load (lbs) |
| 32.0 | 81.6 | 29,540 * | 160.0 | 34.8 | 3,040 | 34.0 | 81.4 | 25,790 * |
| 34.0 | 81.0 | 28,880 * | 165.0 | 32.0 | 2,770 | 36.0 | 80.9 | 25,350 * |
| 36.0 | 80.4 | 28,430 * | 170.0 | 29.1 | 2,510 | 38.0 | 80.3 | 24,910 * |
| 38.0 | 79.8 | 27,990 * | | | | 40.0 | 79.7 | 24,470 * |
| 40.0 | 79.2 | 27,550 * | | | | 45.0 | 78.2 | 23,360 * |
| 45.0 | 77.6 | 26,450 * | | | | 50.0 | 76.8 | 22,480 * |
| 50.0 | 76.1 | 25,300 | | | | 55.0 | 75.3 | 21,380 * |
| 55.0 | 74.5 | 22,110 | | | | 60.0 | 73.8 | 19,310 |
| 60.0 | 72.9 | 19,510 | | | | 65.0 | 72.3 | 17,150 |
| 65.0 | 71.3 | 17,350 | | | | 70.0 | 70.8 | 15,320 |
| 70.0 | 69.7 | 15,540 | | | | 75.0 | 69.3 | 13,770 |
| 75.0 | 68.1 | 13,990 | | | | 80.0 | 67.7 | 12,430 |
| 80.0 | 66.5 | 12,650 | | | | 85.0 | 66.2 | 11,260 |
| 85.0 | 64.8 | 11,500 | | | | 90.0 | 64.6 | 10,250 |
| 90.0 | 63.2 | 10,470 | | | | 95.0 | 63.0 | 9,340 |
| 95.0 | 61.4 | 9,560 | | | | 100.0 | 61.4 | 8,530 |
| 100.0 | 59.7 | 8,770 | | | | 105.0 | 59.7 | 7,820 |
| 105.0 | 57.9 | 8,040 | | | | 110.0 | 58.1 | 7,160 |
| 110.0 | 56.1 | 7,400 | | | | 115.0 | 56.3 | 6,560 |
| 115.0 | 54.3 | 6,810 | | | | 120.0 | 54.6 | 5,970 |
| 120.0 | 52.4 | 6,280 | | | | 125.0 | 52.8 | 5,440 |
| 125.0 | 50.5 | 5,750 | | | | 130.0 | 51.0 | 4,960 |
| 130.0 | 48.5 | 5,260 | | | | 135.0 | 49.1 | 4,510 |
| 135.0 | 46.4 | 4,800 | | | | 140.0 | 47.2 | 4,100 |
| 140.0 | 44.3 | 4,400 | | | | 145.0 | 45.2 | 3,700 |
| 145.0 | 42.1 | 4,010 | | | | 150.0 | 43.1 | 3,350 |
| 150.0 | 39.8 | 3,680 | | | | 155.0 | 41.0 | 3,040 |
| 155.0 | 37.4 | 3,350 | | | | 160.0 | 38.7 | 2,730 |

2 Counterweights + 2 Low Weights - Crawlers fully extended

| 90' Boom | | | | | | | | | 90' Boom | | | | | | | | |
|-------------------------|-------------------------|-------------------------|-------------------------|-------------------------|-------------------------|-------------------------|-------------------------|-------------------------|----------------------|-------------------------|-------------------------|-------------------------|-------------------------|-------------------------|-------------------------|-------------------------|-------------------------|
| 30' Jib | | | | | 40' Jib | | | | 50' Jib | | | | | 60' Jib | | | |
| 10° Offset | | | 30° Offset | | 10° Offset | | 30° Offset | | Load Radius (ft.) | 10° Offset | | 30° Offset | | 10° Offset | | 30° Offset | |
| Load Radius (ft.) | Boom Angle (deg.) | Rated Load (lbs.) | Boom Angle (deg.) | Rated Load (lbs.) | Boom Angle (deg.) | Rated Load (lbs.) | Boom Angle (deg.) | Rated Load (lbs.) | | Boom Angle (deg.) | Rated Load (lbs.) | Boom Angle (deg.) | Rated Load (lbs.) | Boom Angle (deg.) | Rated Load (lbs.) | Boom Angle (deg.) | Rated Load (lbs.) |
| 32 | 79.1 | 24,000 * | | | | | | | 38 | 80.0 | 20,000 * | | | | | | |
| 34 | 78.1 | 24,000 * | | | | | | | 40 | 79.2 | 20,030 * | | | | | | |
| 36 | 77.1 | 24,000 * | | | 79.3 | 24,000 * | | | 45 | 77.1 | 20,030 * | | | 78.6 | 18,000 * | | |
| 38 | 76.2 | 24,000 * | | | 78.4 | 24,000 * | | | 50 | 75.0 | 19,400 * | | | 76.6 | 17,040 * | | |
| 40 | 75.2 | 24,000 * | 79.5 | 20,170 * | 77.5 | 24,000 * | | | 55 | 72.7 | 17,790 * | 78.9 | 11,300 * | 74.5 | 15,580 * | | |
| 45 | 72.7 | 24,000 * | 77.0 | 19,060 * | 75.2 | 24,000 * | | | 60 | 70.5 | 16,510 * | 76.7 | 10,730 * | 72.5 | 14,410 * | 79.5 | 9,100 * |
| 50 | 70.2 | 24,000 * | 74.4 | 18,120 * | 72.9 | 23,320 * | 78.2 | 14,810 * | 65 | 68.3 | 15,380 * | 74.4 | 10,250 * | 70.5 | 13,400 * | 77.4 | 8,660 * |
| 55 | 67.5 | 23,690 | 71.6 | 17,210 * | 70.4 | 21,400 * | 75.6 | 14,020 * | 70 | 66.1 | 14,390 * | 72.0 | 9,780 * | 68.4 | 12,520 * | 75.3 | 8,240 * |
| 60 | 64.9 | 21,120 | 68.9 | 16,460 * | 68.1 | 19,880 * | 73.2 | 13,330 * | 75 | 63.6 | 13,490 * | 69.5 | 9,360 * | 66.1 | 11,680 * | 72.9 | 7,870 * |
| 65 | 62.2 | 19,000 | 66.1 | 15,800 * | 65.6 | 18,560 * | 70.7 | 12,760 * | 80 | 61.3 | 12,720 * | 67.0 | 8,990 * | 64.0 | 11,000 * | 70.7 | 7,530 * |
| 70 | 59.4 | 17,190 | 63.3 | 15,210 * | 63.2 | 17,370 | 68.1 | 12,230 * | 85 | 58.8 | 12,050 * | 64.5 | 8,680 * | 61.8 | 10,400 * | 68.4 | 7,230 * |
| 75 | 56.4 | 15,560 | 60.2 | 14,660 * | 60.4 | 15,740 | 65.3 | 11,720 * | 90 | 56.3 | 11,440 * | 61.8 | 8,370 * | 59.5 | 9,850 * | 66.0 | 6,960 * |
| 80 | 53.5 | 14,240 | 57.1 | 14,190 * | 57.8 | 14,410 | 62.5 | 11,300 * | 95 | 53.6 | 10,860 * | 58.9 | 8,110 * | 57.1 | 9,320 * | 63.4 | 6,700 * |
| 85 | 50.4 | 13,090 | 53.9 | 13,330 | 55.1 | 13,240 | 59.7 | 10,930 * | 100 | 50.9 | 10,380 * | 56.1 | 7,870 * | 54.7 | 8,880 * | 60.9 | 6,480 * |
| 90 | 47.1 | 12,100 | | | 52.3 | 12,230 | 56.7 | 10,580 * | 105 | 48.0 | 9,850 | 53.1 | 7,640 * | 52.2 | 8,480 * | 58.3 | 6,280 * |
| 95 | 43.4 | 11,150 | | | 49.1 | 11,280 | 53.4 | 10,270 * | 110 | 45.0 | 9,210 | | | 49.6 | 8,110 * | 55.5 | 6,100 * |
| 100 | 39.7 | 10,360 | | | 46.0 | 10,490 | | | 115 | 41.7 | 8,570 | | | 46.7 | 7,760 * | 52.4 | 5,930 * |
| 105 | 35.6 | 9,650 | | | 42.7 | 9,760 | | | 120 | 38.2 | 8,040 | | | 43.8 | 7,450 * | | |
| 110 | | | | | 39.1 | 9,120 | | | 125 | 34.4 | 7,560 | | | 40.7 | 7,180 * | | |
| 115 | | | | | 35.0 | 8,500 | | | 130 | | | | | 37.4 | 6,940 * | | |
| | | | | | | | | | 135 | | | | | 33.8 | 6,720 * | | |

CK850-III Jib Rated Loads in Pounds

2 Counterweights + 2 Low Weights - Crawlers fully extended

| 100' Boom | | | | | | | | | 100' Boom | | | | | | | | | | | | |
|-------------|------------|------------|------------|------------|------------|------------|------------|------------|-------------|------------|------------|------------|------------|------------|------------|------------|------------|------------|------------|------------|--|
| 30' Jib | | | | | | | | | 50' Jib | | | | | | | | | 60' Jib | | | |
| 10° Offset | | | 30° Offset | | | 10° Offset | | | 30° Offset | | | 10° Offset | | | 30° Offset | | | 10° Offset | | 30° Offset | |
| Load Radius | Boom Angle | Rated Load | Boom Angle | Rated Load | Boom Angle | Rated Load | Boom Angle | Rated Load | Load Radius | Boom Angle | Rated Load | Boom Angle | Rated Load | Boom Angle | Rated Load | Boom Angle | Rated Load | Boom Angle | Rated Load | | |
| (ft.) | (deg.) | (lbs.) | (deg.) | (lbs.) | (deg.) | (lbs.) | (deg.) | (lbs.) | (ft.) | (deg.) | (lbs.) | (deg.) | (lbs.) | (deg.) | (lbs.) | (deg.) | (lbs.) | (deg.) | (lbs.) | | |
| 32 | 79.9 | 24,000 * | | | | | | | 40 | 79.9 | 20,000 * | | | | | | | | | | |
| 34 | 79.0 | 24,000 * | | | | | | | 45 | 78.0 | 20,000 * | | | | | 79.3 | 18,000 * | | | | |
| 36 | 78.1 | 24,000 * | | | | 80.0 | 24,000 * | | 50 | 76.0 | 20,000 * | | | | | 77.5 | 17,680 * | | | | |
| 38 | 77.2 | 24,000 * | | | | 79.2 | 24,000 * | | 55 | 73.9 | 18,580 * | 79.7 | 11,500 * | | 75.5 | 16,200 * | | | | | |
| 40 | 76.4 | 24,000 * | | | | 78.4 | 24,000 * | | 60 | 71.9 | 17,260 * | 77.7 | 10,950 * | | 73.7 | 15,030 * | | | | | |
| 45 | 74.1 | 24,000 * | 78.0 | 19,480 * | | 76.3 | 24,000 * | | 65 | 69.9 | 16,110 * | 75.5 | 10,470 * | | 71.8 | 13,990 * | 78.3 | 8,810 * | | | |
| 50 | 71.8 | 24,000 * | 75.7 | 18,560 * | | 74.2 | 24,000 * | 79.1 | 15,100 * | 70 | 67.8 | 15,120 * | 73.4 | 10,030 * | | 69.9 | 13,090 * | 76.3 | 8,420 * | | |
| 55 | 69.3 | 23,450 | 73.2 | 17,650 * | | 71.9 | 22,480 * | 76.7 | 14,320 * | 75 | 65.6 | 14,170 * | 71.1 | 9,610 * | | 67.8 | 12,250 * | 74.2 | 8,040 * | | |
| 60 | 67.0 | 20,870 | 70.7 | 16,930 * | | 69.7 | 20,920 * | 74.5 | 13,660 * | 80 | 63.4 | 13,380 * | 68.8 | 9,230 * | | 65.8 | 11,550 * | 72.1 | 7,710 * | | |
| 65 | 64.5 | 18,730 | 68.2 | 16,260 * | | 67.5 | 18,950 | 72.2 | 13,090 * | 85 | 61.2 | 12,690 * | 66.5 | 8,920 * | | 63.8 | 10,910 * | 70.0 | 7,420 * | | |
| 70 | 62.1 | 16,930 | 65.7 | 15,670 * | | 65.3 | 17,150 | 69.9 | 12,560 * | 90 | 59.0 | 12,050 * | 64.2 | 8,610 * | | 61.7 | 10,360 * | 67.9 | 7,160 * | | |
| 75 | 59.4 | 15,290 | 62.9 | 15,100 * | | 62.8 | 15,490 | 67.3 | 12,050 * | 95 | 56.5 | 11,130 | 61.6 | 8,330 * | | 59.5 | 9,810 * | 65.5 | 6,900 * | | |
| 80 | 56.7 | 13,970 | 60.2 | 14,300 | | 60.4 | 14,150 | 64.9 | 11,640 * | 100 | 54.1 | 10,310 | 59.1 | 8,090 * | | 57.3 | 9,340 * | 63.2 | 6,670 * | | |
| 85 | 54.0 | 12,830 | 57.4 | 13,110 | | 58.0 | 13,000 | 62.4 | 11,260 * | 105 | 51.6 | 9,590 | 56.4 | 7,870 * | | 55.1 | 8,920 * | 60.9 | 6,450 * | | |
| 90 | 51.2 | 11,810 | 54.5 | 12,050 | | 55.5 | 11,970 | 59.8 | 10,910 * | 110 | 49.0 | 8,950 | 53.7 | 7,690 * | | 52.7 | 8,550 * | 58.4 | 6,280 * | | |
| 95 | 48.1 | 10,860 | 51.2 | 11,060 | | 52.8 | 11,020 | 56.9 | 10,580 * | 115 | 46.1 | 8,310 | | | | 50.2 | 8,170 * | 55.7 | 6,100 * | | |
| 100 | 45.0 | 10,070 | | | | 50.1 | 10,200 | 54.0 | 10,310 * | 120 | 43.2 | 7,780 | | | | 47.7 | 7,820 | 53.1 | 5,950 * | | |
| 105 | 41.7 | 9,360 | | | | 47.2 | 9,500 | | | 125 | 40.2 | 7,290 | | | | 45.1 | 7,340 | | | | |
| 110 | 38.1 | 8,730 | | | | 44.3 | 8,860 | | | 130 | 36.8 | 6,830 | | | | 42.3 | 6,870 | | | | |
| 115 | 34.0 | 8,130 | | | | 40.9 | 8,220 | | | 135 | 33.2 | 6,430 | | | | 39.4 | 6,480 | | | | |
| 120 | | | | | | 37.4 | 7,690 | | | 140 | | | | | | 35.9 | 6,060 | | | | |
| 125 | | | | | | 33.7 | 7,230 | | | 145 | | | | | | 32.4 | 5,730 | | | | |

| 110' Boom | | | | | | | | | 110' Boom | | | | | | | | | | | | |
|-------------|------------|------------|------------|------------|------------|------------|------------|------------|-------------|------------|------------|------------|------------|------------|------------|------------|------------|------------|------------|------------|--|
| 30' Jib | | | | | | | | | 50' Jib | | | | | | | | | 60' Jib | | | |
| 10° Offset | | | 30° Offset | | | 10° Offset | | | 30° Offset | | | 10° Offset | | | 30° Offset | | | 10° Offset | | 30° Offset | |
| Load Radius | Boom Angle | Rated Load | Boom Angle | Rated Load | Boom Angle | Rated Load | Boom Angle | Rated Load | Load Radius | Boom Angle | Rated Load | Boom Angle | Rated Load | Boom Angle | Rated Load | Boom Angle | Rated Load | Boom Angle | Rated Load | | |
| (ft.) | (deg.) | (lbs.) | (deg.) | (lbs.) | (deg.) | (lbs.) | (deg.) | (lbs.) | (ft.) | (deg.) | (lbs.) | (deg.) | (lbs.) | (deg.) | (lbs.) | (deg.) | (lbs.) | (deg.) | (lbs.) | | |
| 34 | 79.8 | 24,000 | | | | | | | 45 | 78.8 | 20,000 * | | | | | 80.0 | 18,000 * | | | | |
| 36 | 79.0 | 24,000 | | | | | | | 50 | 76.9 | 20,000 * | | | | | 78.3 | 18,000 * | | | | |
| 38 | 78.2 | 24,000 | | | | 79.9 | 24,000 * | | 55 | 75.0 | 19,330 * | | | | | 76.4 | 16,820 * | | | | |
| 40 | 77.3 | 24,000 | | | | 79.2 | 24,000 * | | 60 | 73.1 | 17,980 * | 78.5 | 11,150 * | | 74.7 | 15,600 * | | | | | |
| 45 | 75.3 | 24,000 | 79.0 | 19,860 * | | 77.2 | 24,000 * | | 65 | 71.2 | 16,820 * | 76.5 | 10,670 * | | 72.9 | 14,570 * | 79.1 | 8,970 * | | | |
| 50 | 73.2 | 24,000 | 76.8 | 18,930 * | | 75.3 | 24,000 * | 79.9 | 15,360 * | 70 | 69.3 | 15,800 * | 74.6 | 10,250 * | | 71.1 | 13,640 * | 77.2 | 8,570 * | | |
| 55 | 70.9 | 23,320 | 74.5 | 18,070 * | | 73.2 | 23,500 * | 77.7 | 14,610 * | 75 | 67.2 | 14,830 * | 72.4 | 9,830 * | | 69.2 | 12,780 * | 75.2 | 8,200 * | | |
| 60 | 68.7 | 20,740 | 72.2 | 17,350 * | | 71.2 | 20,960 | 75.6 | 13,970 * | 80 | 65.2 | 14,020 * | 70.4 | 9,470 * | | 67.3 | 12,050 * | 73.3 | 7,890 * | | |
| 65 | 66.5 | 18,580 | 70.0 | 16,680 * | | 69.1 | 18,800 | 73.5 | 13,400 * | 85 | 63.2 | 12,960 | 68.3 | 9,140 * | | 65.5 | 11,410 * | 71.4 | 7,580 * | | |
| 70 | 64.3 | 16,770 | 67.7 | 16,090 * | | 67.1 | 16,970 | 71.4 | 12,870 * | 90 | 61.2 | 11,920 | 66.1 | 8,840 * | | 63.6 | 10,840 * | 69.4 | 7,310 * | | |
| 75 | 61.8 | 15,140 | 65.1 | 15,520 * | | 64.8 | 15,340 | 69.1 | 12,380 * | 95 | 58.9 | 10,950 | 63.8 | 8,550 * | | 61.5 | 10,270 * | 67.2 | 7,050 * | | |
| 80 | 59.4 | 13,820 | 62.7 | 14,170 | | 62.7 | 13,990 | 66.9 | 11,940 * | 100 | 56.7 | 10,160 | 61.5 | 8,310 * | | 59.5 | 9,780 * | 65.2 | 6,830 * | | |
| 85 | 57.0 | 12,670 | 60.2 | 12,980 | | 60.5 | 12,830 | 64.6 | 11,570 * | 105 | 54.5 | 9,430 | 59.2 | 8,090 * | | 57.5 | 9,360 * | 63.0 | 6,630 * | | |
| 90 | 54.5 | 11,660 | 57.6 | 11,920 | | 58.2 | 11,810 | 62.2 | 11,220 * | 110 | 52.2 | 8,770 | 56.7 | 7,890 * | | 55.4 | 8,840 | 60.9 | 6,430 * | | |
| 95 | 51.8 | 10,710 | 54.8 | 10,930 | | 55.7 | 10,840 | 59.7 | 10,890 * | 115 | 49.7 | 8,130 | 54.0 | 7,690 * | | 53.1 | 8,200 | 58.4 | 6,260 * | | |
| 100 | 49.1 | 9,920 | 52.0 | 10,110 | | 53.3 | 10,050 | 57.1 | 10,470 | 120 | 47.2 | 7,600 | | | | 50.9 | 7,640 | 56.1 | 6,100 * | | |
| 105 | 46.3 | 9,210 | | | | 50.8 | 9,320 | 54.5 | 9,700 | 125 | 44.5 | 7,120 | | | | 48.6 | 7,160 | 53.6 | 5,970 * | | |
| 110 | 43.3 | 8,570 | | | | 48.2 | 8,680 | 51.8 | 9,010 | 130 | 41.8 | 6,650 | | | | 46.2 | 6,700 | | | | |
| 115 | 39.9 | 7,950 | | | | 45.4 | 8,040 | | | 135 | 38.8 | 6,260 | | | | 43.6 | 6,300 | | | | |
| 120 | 36.5 | 7,420 | | | | 42.5 | 7,510 | | | 140 | 35.4 | 5,860 | | | | 40.8 | 5,880 | | | | |
| 125 | 32.7 | 6,960 | | | | 39.4 | 7,050 | | | 145 | | | | | | 37.9 | 5,530 | | | | |
| 130 | | | | | | 36.1 | 6,610 | | | 150 | | | | | | 34.8 | 5,220 | | | | |
| 135 | | | | | | 32.5 | 6,190 | | | | | | | | | | | | | | |

CK850-III Jib Rated Loads in Pounds

2 Counterweights + 2 Low Weights - Crawlers fully extended

| 120' Boom | | | | | | | | | 120' Boom | | | | | | | | |
|------------|--------|------------|--------|------------|---------|------------|--------|----------------------|------------|--------|------------|--------|------------|---------|------------|--------|---------|
| 30' Jib | | | | | 40' Jib | | | | 50' Jib | | | | | 60' Jib | | | |
| 10° Offset | | 30° Offset | | 10° Offset | | 30° Offset | | Load Radius (ft.) | 10° Offset | | 30° Offset | | 10° Offset | | 30° Offset | | |
| Load | Boom | Rated | Boom | Rated | Boom | Rated | Boom | | Rated | Load | Boom | Rated | Boom | Rated | Load | Boom | Rated |
| Angle | Angle | Load | Angle | Load | Angle | Load | Angle | | Load | Angle | Angle | Load | Angle | Load | Angle | Angle | Load |
| (deg.) | (deg.) | (lbs.) | (deg.) | (lbs.) | (deg.) | (lbs.) | (deg.) | | (lbs.) | (deg.) | (deg.) | (lbs.) | (deg.) | (lbs.) | (deg.) | (deg.) | (lbs.) |
| 36 | 79.7 | 24,000 * | | | | | | | 45 | 79.5 | 20,000 * | | | | | | |
| 38 | 79.0 | 24,000 * | | | | | | | 50 | 77.7 | 20,000 * | | | 78.9 | 18,000 * | | |
| 40 | 78.2 | 24,000 * | | | | | | | 55 | 75.9 | 20,000 * | | | 77.2 | 17,390 * | | |
| 45 | 76.3 | 24,000 * | 79.7 | 20,190 * | 78.1 | 24,000 * | | | 60 | 74.2 | 18,690 * | 79.2 | 11,330 * | 75.6 | 16,180 * | | |
| 50 | 74.3 | 24,000 * | 77.7 | 19,290 * | 76.2 | 24,000 * | | | 65 | 72.4 | 17,500 * | 77.4 | 10,860 * | 73.9 | 15,120 * | 79.7 | 9,080 * |
| 55 | 72.2 | 23,100 | 75.6 | 18,450 * | 74.3 | 23,360 | 78.5 | 14,880 * | 70 | 70.6 | 16,440 * | 75.6 | 10,420 * | 72.2 | 14,170 * | 78.0 | 8,700 * |
| 60 | 70.2 | 20,520 | 73.5 | 17,720 * | 72.4 | 20,760 | 76.6 | 14,240 * | 75 | 68.7 | 15,250 | 73.6 | 10,030 * | 70.4 | 13,290 * | 76.1 | 8,350 * |
| 65 | 68.2 | 18,360 | 71.4 | 17,080 * | 70.5 | 18,580 | 74.7 | 13,690 * | 80 | 66.8 | 13,910 | 71.7 | 9,670 * | 68.7 | 12,560 * | 74.4 | 8,040 * |
| 70 | 66.1 | 16,550 | 69.3 | 16,490 * | 68.6 | 16,770 | 72.7 | 13,160 * | 85 | 65.0 | 12,740 | 69.7 | 9,340 * | 67.0 | 11,900 * | 72.6 | 7,730 * |
| 75 | 63.9 | 14,920 | 67.0 | 15,340 | 66.5 | 15,100 | 70.6 | 12,670 * | 90 | 63.1 | 11,700 | 67.8 | 9,060 * | 65.2 | 11,300 * | 70.7 | 7,470 * |
| 80 | 61.7 | 13,600 | 64.8 | 13,970 | 64.5 | 13,770 | 68.5 | 12,250 * | 95 | 61.0 | 10,730 | 65.6 | 8,770 * | 63.3 | 10,730 * | 68.7 | 7,230 * |
| 85 | 59.5 | 12,430 | 62.6 | 12,780 | 62.5 | 12,610 | 66.4 | 11,860 * | 100 | 59.0 | 9,920 | 63.6 | 8,500 * | 61.5 | 9,980 | 66.8 | 7,010 * |
| 90 | 57.3 | 11,410 | 60.2 | 11,720 | 60.5 | 11,570 | 64.3 | 11,500 * | 105 | 57.0 | 9,190 | 61.4 | 8,280 * | 59.6 | 9,250 | 64.9 | 6,790 * |
| 95 | 54.8 | 10,470 | 57.7 | 10,730 | 58.2 | 10,620 | 62.0 | 11,130 | 110 | 54.9 | 8,530 | 59.3 | 8,060 * | 57.7 | 8,590 | 62.9 | 6,610 * |
| 100 | 52.4 | 9,650 | 55.2 | 9,890 | 56.0 | 9,810 | 59.7 | 10,290 | 115 | 52.6 | 7,890 | 56.8 | 7,870 * | 55.6 | 7,950 | 60.7 | 6,410 * |
| 105 | 49.9 | 8,950 | 52.6 | 9,140 | 53.8 | 9,080 | 57.4 | 9,520 | 120 | 50.4 | 7,360 | 54.5 | 7,690 * | 53.6 | 7,400 | 58.6 | 6,260 * |
| 110 | 47.3 | 8,310 | | | 51.5 | 8,440 | 55.0 | 8,840 | 125 | 48.1 | 6,850 | 52.1 | 7,250 | 51.5 | 6,920 | 56.4 | 6,100 * |
| 115 | 44.5 | 7,690 | | | 49.0 | 7,800 | 52.3 | 8,150 | 130 | 45.7 | 6,410 | | | 49.3 | 6,450 | 54.1 | 5,970 * |
| 120 | 41.6 | 7,160 | | | 46.5 | 7,270 | | | 135 | 43.1 | 5,990 | | | 47.1 | 6,040 | 51.7 | 5,860 * |
| 125 | 38.5 | 6,670 | | | 43.8 | 6,790 | | | 140 | 40.3 | 5,590 | | | 44.6 | 5,640 | | |
| 130 | 35.3 | 6,230 | | | 41.1 | 6,320 | | | 145 | 37.4 | 5,240 | | | 42.2 | 5,290 | | |
| 135 | 31.7 | 5,840 | | | 38.1 | 5,930 | | | 150 | 34.3 | 4,910 | | | 39.6 | 4,960 | | |
| 140 | | | | | 34.7 | 5,530 | | | 155 | | | | | 36.8 | 4,650 | | |
| | | | | | | | | | 160 | | | | | 33.6 | 4,340 | | |

| 130' Boom | | | | | | | | | 130' Boom | | | | | | | | |
|------------|--------|------------|--------|------------|---------|------------|--------|----------------------|------------|--------|------------|--------|------------|---------|------------|--------|---------|
| 30' Jib | | | | | 40' Jib | | | | 50' Jib | | | | | 60' Jib | | | |
| 10° Offset | | 30° Offset | | 10° Offset | | 30° Offset | | Load Radius (ft.) | 10° Offset | | 30° Offset | | 10° Offset | | 30° Offset | | |
| Load | Boom | Rated | Boom | Rated | Boom | Rated | Boom | | Rated | Load | Boom | Rated | Boom | Rated | Load | Boom | Rated |
| Angle | Angle | Load | Angle | Load | Angle | Load | Angle | | Load | Angle | Angle | Load | Angle | Load | Angle | Angle | Load |
| (deg.) | (deg.) | (lbs.) | (deg.) | (lbs.) | (deg.) | (lbs.) | (deg.) | | (lbs.) | (deg.) | (deg.) | (lbs.) | (deg.) | (lbs.) | (deg.) | (deg.) | (lbs.) |
| 38 | 79.7 | 24,000 * | | | | | | | 45 | 80.0 | 20,000 * | | | | | | |
| 40 | 79.0 | 24,000 * | | | | | | | 50 | 78.4 | 20,000 * | | | 79.5 | 18,000 * | | |
| 45 | 77.1 | 24,000 * | | | | | | | 55 | 76.7 | 20,000 * | | | 77.9 | 17,920 * | | |
| 50 | 75.3 | 24,000 * | 78.5 | 19,620 * | 77.1 | 24,000 * | | | 60 | 75.1 | 19,330 * | 79.9 | 11,480 * | 76.3 | 16,710 * | | |
| 55 | 73.4 | 22,880 | 76.5 | 18,780 * | 75.2 | 23,170 | 79.3 | 15,100 * | 65 | 73.4 | 18,140 * | 78.2 | 11,020 * | 74.8 | 15,630 * | | |
| 60 | 71.5 | 20,300 | 74.6 | 18,070 * | 73.5 | 20,540 | 77.5 | 14,500 * | 70 | 71.7 | 16,710 | 76.5 | 10,620 * | 73.2 | 14,680 * | 78.7 | 8,840 * |
| 65 | 69.6 | 18,140 | 72.7 | 17,430 * | 71.7 | 18,380 | 75.7 | 13,930 * | 75 | 69.9 | 15,030 | 74.6 | 10,200 * | 71.5 | 13,800 * | 76.9 | 8,480 * |
| 70 | 67.7 | 16,330 | 70.7 | 16,860 | 69.9 | 16,550 | 73.8 | 13,420 * | 80 | 68.2 | 13,690 | 72.8 | 9,850 * | 69.9 | 13,050 * | 75.3 | 8,170 * |
| 75 | 65.6 | 14,680 | 68.6 | 15,140 | 68.0 | 14,880 | 71.8 | 12,940 * | 85 | 66.5 | 12,520 | 71.0 | 9,540 * | 68.3 | 12,360 * | 73.6 | 7,890 * |
| 80 | 63.6 | 13,350 | 66.6 | 13,770 | 66.2 | 13,550 | 69.9 | 12,520 * | 90 | 64.7 | 11,480 | 69.2 | 9,230 * | 66.6 | 11,570 | 71.9 | 7,620 * |
| 85 | 61.6 | 12,210 | 64.5 | 12,580 | 64.3 | 12,380 | 68.0 | 12,140 * | 95 | 62.8 | 10,510 | 67.2 | 8,950 * | 64.8 | 10,580 | 70.0 | 7,360 * |
| 90 | 59.6 | 11,170 | 62.4 | 11,530 | 62.4 | 11,350 | 66.1 | 11,770 * | 100 | 61.0 | 9,700 | 65.3 | 8,700 * | 63.1 | 9,760 | 68.3 | 7,140 * |
| 95 | 57.3 | 10,220 | 60.1 | 10,510 | 60.3 | 10,380 | 63.9 | 10,950 | 105 | 59.1 | 8,950 | 63.4 | 8,480 * | 61.4 | 9,030 | 66.5 | 6,940 * |
| 100 | 55.2 | 9,430 | 57.9 | 9,700 | 58.3 | 9,560 | 61.9 | 10,090 | 110 | 57.2 | 8,310 | 61.4 | 8,260 * | 59.6 | 8,370 | 64.6 | 6,740 * |
| 105 | 52.9 | 8,700 | 55.6 | 8,950 | 56.3 | 8,860 | 59.8 | 9,340 | 115 | 55.1 | 7,670 | 59.2 | 8,040 * | 57.7 | 7,730 | 62.6 | 6,560 * |
| 110 | 50.6 | 8,060 | 53.2 | 8,260 | 54.2 | 8,200 | 57.6 | 8,640 | 120 | 53.1 | 7,120 | 57.1 | 7,600 | 55.9 | 7,180 | 60.7 | 6,390 * |
| 115 | 48.1 | 7,450 | | | 51.9 | 7,560 | 55.2 | 7,980 | 125 | 51.0 | 6,630 | 54.9 | 7,070 | 54.0 | 6,670 | 58.7 | 6,230 * |
| 120 | 45.6 | 6,920 | | | 49.7 | 7,030 | 52.9 | 7,400 | 130 | 48.8 | 6,170 | 52.6 | 6,590 | 52.0 | 6,230 | 56.6 | 6,100 * |
| 125 | 43.0 | 6,430 | | | 47.4 | 6,540 | | | 135 | 46.6 | 5,750 | | | 50.0 | 5,820 | 54.5 | 5,970 * |
| 130 | 40.2 | 5,990 | | | 45.0 | 6,080 | | | 140 | 44.1 | 5,350 | | | 47.8 | 5,400 | 52.2 | 5,840 |
| 135 | 37.3 | 5,570 | | | 42.5 | 5,680 | | | 145 | 41.7 | 5,000 | | | 45.6 | 5,040 | | |
| 140 | 33.9 | 5,200 | | | 39.6 | 5,260 | | | 150 | 39.1 | 4,670 | | | 43.3 | 4,710 | | |
| 145 | | | | | 36.8 | 4,930 | | | 155 | 36.3 | 4,360 | | | 41.0 | 4,400 | | |
| 150 | | | | | 33.7 | 4,600 | | | 160 | 33.1 | 4,030 | | | 38.3 | 4,070 | | |
| | | | | | | | | | 165 | | | | | 35.6 | 3,760 | | |
| | | | | | | | | | 170 | | | | | 32.7 | 3,480 | | |

CK850-III Jib Rated Loads in Pounds

2 Counterweights + 2 Low Weights - Crawlers fully extended

140' Boom

| | | 30' Jib | | | 40' Jib | | | | |
|----------------------|----------------------|----------------------|----------------------|----------------------|----------------------|----------------------|----------------------|----------------------|----------------------|
| Load Radius (ft.) | Boom Angle (deg.) | 10° Offset | | 30° Offset | | 10° Offset | | 30° Offset | |
| | | Rated Load (lbs.) | Boom Angle (deg.) | Rated Load (lbs.) | Boom Angle (deg.) | Rated Load (lbs.) | Boom Angle (deg.) | Rated Load (lbs.) | Boom Angle (deg.) |
| 40 | 79.6 | 24,000 * | | | | | | | |
| 45 | 77.9 | 24,000 * | | | 79.4 | 24,000 * | | | |
| 50 | 76.2 | 24,000 * | 79.2 | 19,900 * | 77.8 | 24,000 * | | | |
| 55 | 74.4 | 22,680 | 77.4 | 19,090 * | 76.1 | 22,970 | 79.9 | 15,320 * | |
| 60 | 72.6 | 20,080 | 75.6 | 18,400 * | 74.4 | 20,340 | 78.2 | 14,720 * | |
| 65 | 70.9 | 17,940 | 73.8 | 17,760 * | 72.8 | 18,180 | 76.5 | 14,170 * | |
| 70 | 69.1 | 16,110 | 72.0 | 16,680 | 71.1 | 16,330 | 74.8 | 13,690 * | |
| 75 | 67.2 | 14,460 | 70.0 | 14,960 | 69.3 | 14,680 | 72.9 | 13,180 * | |
| 80 | 65.3 | 13,130 | 68.1 | 13,600 | 67.6 | 13,330 | 71.2 | 12,760 * | |
| 85 | 63.5 | 11,970 | 66.2 | 12,380 | 65.9 | 12,160 | 69.4 | 12,380 * | |
| 90 | 61.6 | 10,950 | 64.3 | 11,330 | 64.1 | 11,130 | 67.6 | 11,810 | |
| 95 | 59.5 | 9,980 | 62.2 | 10,310 | 62.2 | 10,160 | 65.6 | 10,780 | |
| 100 | 57.5 | 9,190 | 60.1 | 9,500 | 60.3 | 9,340 | 63.7 | 9,920 | |
| 105 | 55.5 | 8,460 | 58.1 | 8,750 | 58.5 | 8,610 | 61.8 | 9,140 | |
| 110 | 53.4 | 7,820 | 55.9 | 8,060 | 56.6 | 7,950 | 59.8 | 8,460 | |
| 115 | 51.1 | 7,180 | 53.5 | 7,400 | 54.5 | 7,340 | 57.6 | 7,780 | |
| 120 | 48.9 | 6,650 | 51.3 | 6,850 | 52.5 | 6,790 | 55.5 | 7,200 | |
| 125 | 46.6 | 6,170 | | | 50.4 | 6,300 | 53.4 | 6,670 | |
| 130 | 44.2 | 5,730 | | | 48.2 | 5,840 | | | |
| 135 | 41.7 | 5,330 | | | 46.0 | 5,420 | | | |
| 140 | 38.8 | 4,910 | | | 43.5 | 5,020 | | | |
| 145 | 36.0 | 4,560 | | | 41.1 | 4,670 | | | |
| 150 | 32.9 | 4,210 | | | 38.5 | 4,320 | | | |
| 155 | | | | | 35.7 | 3,940 | | | |
| 160 | | | | | 32.5 | 3,610 | | | |

140' Boom

| | | 50' Jib | | | 60' Jib | | | | |
|----------------------|----------------------|----------------------|----------------------|----------------------|----------------------|----------------------|----------------------|----------------------|----------------------|
| Load Radius (ft.) | Boom Angle (deg.) | 10° Offset | | 30° Offset | | 10° Offset | | 30° Offset | |
| | | Rated Load (lbs.) | Boom Angle (deg.) | Rated Load (lbs.) | Boom Angle (deg.) | Rated Load (lbs.) | Boom Angle (deg.) | Rated Load (lbs.) | Boom Angle (deg.) |
| 50 | 79.1 | 20,000 * | | | | | | | |
| 55 | 77.4 | 20,000 * | | | | 78.5 | 18,000 * | | |
| 60 | 75.9 | 19,970 * | | | | 77.0 | 17,210 * | | |
| 65 | 74.3 | 18,360 | | | 78.8 | 11,170 * | 75.6 | 16,130 * | |
| 70 | 72.8 | 16,510 | 77.2 | 10,780 * | 74.1 | 15,160 * | 79.3 | 8,950 * | |
| 75 | 71.1 | 14,830 | 75.5 | 10,380 * | 72.5 | 14,260 * | 77.7 | 8,590 * | |
| 80 | 69.4 | 13,490 | 73.8 | 10,030 * | 71.0 | 13,490 * | 76.1 | 8,310 * | |
| 85 | 67.8 | 12,300 | 72.1 | 9,720 * | 69.4 | 12,410 | 74.5 | 8,020 * | |
| 90 | 66.2 | 11,260 | 70.4 | 9,430 * | 67.9 | 11,350 | 72.9 | 7,760 * | |
| 95 | 64.4 | 10,290 | 68.6 | 9,120 * | 66.2 | 10,380 | 71.2 | 7,510 * | |
| 100 | 62.7 | 9,470 | 66.8 | 8,880 * | 64.6 | 9,540 | 69.5 | 7,270 * | |
| 105 | 60.9 | 8,730 | 65.0 | 8,660 * | 63.0 | 8,810 | 67.8 | 7,070 * | |
| 110 | 59.2 | 8,060 | 63.2 | 8,440 * | 61.4 | 8,150 | 66.1 | 6,870 * | |
| 115 | 57.2 | 7,420 | 61.2 | 8,000 | 59.6 | 7,490 | 64.3 | 6,700 * | |
| 120 | 55.4 | 6,900 | 59.3 | 7,420 | 57.9 | 6,960 | 62.5 | 6,520 * | |
| 125 | 53.5 | 6,390 | 57.3 | 6,900 | 56.1 | 6,450 | 60.7 | 6,370 * | |
| 130 | 51.6 | 5,930 | 55.3 | 6,390 | 54.3 | 5,990 | 58.8 | 6,230 * | |
| 135 | 49.5 | 5,510 | 53.1 | 5,950 | 52.5 | 5,570 | 56.9 | 6,100 * | |
| 140 | 47.3 | 5,090 | | | 50.5 | 5,150 | 54.7 | 5,640 | |
| 145 | 45.1 | 4,730 | | | 48.5 | 4,800 | 52.7 | 5,240 | |
| 150 | 42.9 | 4,400 | | | 46.5 | 4,470 | | | |
| 155 | 40.5 | 4,030 | | | 44.4 | 4,100 | | | |
| 160 | 37.8 | 3,680 | | | 42.0 | 3,720 | | | |
| 165 | 35.1 | 3,370 | | | 39.7 | 3,410 | | | |
| 170 | 32.2 | 3,080 | | | 37.3 | 3,130 | | | |
| 175 | | | | | 34.6 | 2,840 | | | |

150' Boom

| | | 30' Jib | | | 40' Jib | | | | |
|----------------------|----------------------|----------------------|----------------------|----------------------|----------------------|----------------------|----------------------|----------------------|----------------------|
| Load Radius (ft.) | Boom Angle (deg.) | 10° Offset | | 30° Offset | | 10° Offset | | 30° Offset | |
| | | Rated Load (lbs.) | Boom Angle (deg.) | Rated Load (lbs.) | Boom Angle (deg.) | Rated Load (lbs.) | Boom Angle (deg.) | Rated Load (lbs.) | Boom Angle (deg.) |
| 45 | 78.6 | 24,000 * | | | 80.0 | 24,000 * | | | |
| 50 | 77.0 | 24,000 * | 79.9 | 20,170 * | 78.5 | 24,000 * | | | |
| 55 | 75.3 | 22,530 | 78.1 | 19,370 * | 76.8 | 22,810 | | | |
| 60 | 73.6 | 19,920 | 76.4 | 18,690 * | 75.3 | 20,190 | 78.9 | 14,920 * | |
| 65 | 72.0 | 17,790 | 74.8 | 18,070 * | 73.7 | 18,030 | 77.3 | 14,390 * | |
| 70 | 70.3 | 15,960 | 73.1 | 16,550 | 72.1 | 16,180 | 75.7 | 13,910 * | |
| 75 | 68.5 | 14,300 | 71.2 | 14,830 | 70.5 | 14,520 | 73.9 | 13,420 * | |
| 80 | 66.8 | 12,980 | 69.5 | 13,470 | 68.8 | 13,180 | 72.3 | 13,000 * | |
| 85 | 65.1 | 11,810 | 67.7 | 12,250 | 67.2 | 12,010 | 70.6 | 12,630 * | |
| 90 | 63.3 | 10,800 | 65.9 | 11,190 | 65.6 | 10,970 | 68.9 | 11,680 | |
| 95 | 61.4 | 9,830 | 63.9 | 10,180 | 63.8 | 10,000 | 67.1 | 10,670 | |
| 100 | 59.6 | 9,010 | 62.1 | 9,340 | 62.1 | 9,190 | 65.3 | 9,810 | |
| 105 | 57.7 | 8,310 | 60.2 | 8,590 | 60.4 | 8,460 | 63.5 | 9,030 | |
| 110 | 55.8 | 7,640 | 58.2 | 7,910 | 58.6 | 7,800 | 61.7 | 8,330 | |
| 115 | 53.7 | 7,030 | 56.1 | 7,270 | 56.7 | 7,160 | 59.7 | 7,670 | |
| 120 | 51.7 | 6,500 | 54.0 | 6,700 | 54.8 | 6,610 | 57.8 | 7,090 | |
| 125 | 49.6 | 5,990 | 51.8 | 6,190 | 52.9 | 6,120 | 55.8 | 6,560 | |
| 130 | 47.5 | 5,550 | | | 51.0 | 5,660 | 53.8 | 6,080 | |
| 135 | 45.3 | 5,150 | | | 49.0 | 5,260 | | | |
| 140 | 42.8 | 4,730 | | | 46.7 | 4,850 | | | |
| 145 | 40.3 | 4,320 | | | 44.6 | 4,450 | | | |
| 150 | 37.8 | 3,940 | | | 42.3 | 4,050 | | | |
| 155 | 35.0 | 3,590 | | | 39.9 | 3,700 | | | |
| 160 | 31.8 | 3,260 | | | 37.3 | 3,350 | | | |
| 165 | | | | | 34.6 | 3,040 | | | |

150' Boom

| | | 50' Jib | | | 60' Jib | | | | |
|----------------------|----------------------|----------------------|----------------------|----------------------|----------------------|----------------------|----------------------|----------------------|----------------------|
| Load Radius (ft.) | Boom Angle (deg.) | 10° Offset | | 30° Offset | | 10° Offset | | 30° Offset | |
| | | Rated Load (lbs.) | Boom Angle (deg.) | Rated Load (lbs.) | Boom Angle (deg.) | Rated Load (lbs.) | Boom Angle (deg.) | Rated Load (lbs.) | Boom Angle (deg.) |
| 50 | 79.6 | 20,000 * | | | | | | | |
| 55 | 78.1 | 20,000 * | | | | 79.1 | 18,000 * | | |
| 60 | 76.6 | 20,000 * | | | | 77.7 | 17,700 * | | |
| 65 | 75.1 | 18,200 | 79.4 | 11,330 * | 76.3 | 16,600 * | | | |
| 70 | 73.7 | 16,350 | 77.9 | 10,930 * | 74.9 | 15,650 * | 79.9 | 9,060 * | |
| 75 | 72.1 | 14,680 | 76.3 | 10,530 * | 73.4 | 14,720 * | 78.3 | 8,700 * | |
| 80 | 70.5 | 13,330 | 74.7 | 10,200 * | 71.9 | 13,420 | 76.8 | 8,420 * | |
| 85 | 69.0 | 12,140 | 73.1 | 9,870 * | 70.5 | 12,230 | 75.3 | 8,130 * | |
| 90 | 67.5 | 11,110 | 71.5 | 9,590 * | 69.0 | 11,190 | 73.8 | 7,890 * | |
| 95 | 65.8 | 10,110 | 69.8 | 9,300 * | 67.4 | 10,200 | 72.2 | 7,620 * | |
| 100 | 64.2 | 9,300 | 68.2 | 9,060 * | 65.9 | 9,390 | 70.6 | 7,400 * | |
| 105 | 62.6 | 8,570 | 66.5 | 8,810 * | 64.4 | 8,640 | 69.1 | 7,200 * | |
| 110 | 60.9 | 7,910 | 64.8 | 8,570 | 62.9 | 7,980 | 67.5 | 7,010 * | |
| 115 | 59.1 | 7,270 | 62.9 | 7,890 | 61.2 | 7,340 | 65.7 | 6,830 * | |
| 120 | 57.4 | 6,720 | 61.2 | 7,290 | 59.6 | 6,790 | 64.1 | 6,650 * | |
| 125 | 55.7 | 6,210 | 59.3 | 6,760 | 58.0 | 6,280 | 62.4 | 6,500 * | |
| 130 | 53.9 | 5,750 | 57.5 | 6,280 | 56.3 | 5,820 | 60.7 | 6,370 * | |
| 135 | 52.0 | 5,330 | 55.6 | 5,820 | 54.6 | 5,400 | 58.9 | 5,970 | |
| 140 | 50.0 | 4,930 | 53.4 | 5,350 | 52.8 | 4,980 | 57.0 | 5,530 | |
| 145 | 48.1 | 4,560 | | | 51.0 | 4,620 | 55.1 | 5,130 | |
| 150 | 46.1 | 4,160 | | | 49.2 | 4,230 | 53.1 | 4,760 | |
| 155 | 43.9 | 3,790 | | | 47.3 | 3,850 | | | |
| 160 | 41.6 | 3,430 | | | 45.2 | 3,480 | | | |
| 165 | 39.3 | 3,100 | | | 43.1 | 3,170 | | | |
| 170 | 36.8 | 2,820 | | | 41.0 | 2,860 | | | |
| 175 | 34.2 | 2,550 | | | 38.7 | 2,600 | | | |

CK850-III Jib Rated Loads in Pounds

2 Counterweights + 2 Low Weights - Crawlers fully extended

| 160' Boom | | | | | | | | | 160' Boom | | | | | | | | |
|----------------------|----------------------|----------------------|----------------------|----------------------|----------------------|----------------------|----------------------|----------------------|----------------------|----------------------|----------------------|----------------------|----------------------|----------------------|----------------------|----------------------|----------------------|
| | | | 30' Jib | | | 40' Jib | | | | | | 50' Jib | | | 60' Jib | | |
| Load Radius (ft.) | 10° Offset | | 30° Offset | | 10° Offset | | 30° Offset | | Load Radius (ft.) | 10° Offset | | 30° Offset | | 10° Offset | | 30° Offset | |
| | Boom Angle (deg.) | Rated Load (lbs.) | Boom Angle (deg.) | Rated Load (lbs.) | Boom Angle (deg.) | Rated Load (lbs.) | Boom Angle (deg.) | Rated Load (lbs.) | | Boom Angle (deg.) | Rated Load (lbs.) | Boom Angle (deg.) | Rated Load (lbs.) | Boom Angle (deg.) | Rated Load (lbs.) | Boom Angle (deg.) | Rated Load (lbs.) |
| 45 | 79.2 | 24,000 * | | | | | | | 55 | 78.7 | 20,000 * | | | 79.6 | 18,000 * | | |
| 50 | 77.7 | 24,000 * | | | 79.0 | 22,830 * | | | 60 | 77.3 | 19,200 * | | | 78.3 | 17,800 * | | |
| 55 | 76.1 | 22,350 | 78.8 | 19,640 * | 77.5 | 22,000 * | | | 65 | 75.9 | 18,030 | 80.0 | 11,440 * | 76.9 | 17,060 * | | |
| 60 | 74.5 | 19,750 | 77.2 | 18,950 * | 76.0 | 20,030 | 79.5 | 15,120 * | 70 | 74.5 | 16,180 | 78.5 | 11,060 * | 75.6 | 16,090 * | | |
| 65 | 73.0 | 17,590 | 75.6 | 18,290 | 74.6 | 17,850 | 78.0 | 14,590 * | 75 | 72.9 | 14,500 | 77.0 | 10,670 * | 74.2 | 14,610 | 78.9 | 8,810 * |
| 70 | 71.4 | 15,760 | 74.0 | 16,400 | 73.1 | 16,000 | 76.4 | 14,100 * | 80 | 71.5 | 13,130 | 75.5 | 10,330 * | 72.8 | 13,240 | 77.5 | 8,530 * |
| 75 | 69.7 | 14,100 | 72.3 | 14,680 | 71.5 | 14,320 | 74.8 | 13,640 * | 85 | 70.1 | 11,940 | 74.0 | 10,030 * | 71.4 | 12,050 | 76.1 | 8,240 * |
| 80 | 68.1 | 12,780 | 70.7 | 13,290 | 70.0 | 12,980 | 73.2 | 13,220 * | 90 | 68.6 | 10,910 | 72.5 | 9,740 * | 70.0 | 11,000 | 74.6 | 8,000 * |
| 85 | 66.5 | 11,610 | 69.0 | 12,080 | 68.4 | 11,810 | 71.7 | 12,630 | 95 | 67.0 | 9,920 | 70.9 | 9,450 * | 68.5 | 10,000 | 73.1 | 7,760 * |
| 90 | 64.8 | 10,580 | 67.3 | 11,020 | 66.9 | 10,780 | 70.1 | 11,530 | 100 | 65.5 | 9,100 | 69.3 | 9,210 * | 67.1 | 9,190 | 71.6 | 7,530 * |
| 95 | 63.0 | 9,630 | 65.5 | 10,000 | 65.2 | 9,780 | 68.4 | 10,510 | 105 | 64.0 | 8,370 | 67.8 | 8,970 * | 65.7 | 8,440 | 70.2 | 7,310 * |
| 100 | 61.3 | 8,810 | 63.8 | 9,170 | 63.6 | 8,970 | 66.7 | 9,650 | 110 | 62.5 | 7,690 | 66.2 | 8,420 | 64.2 | 7,780 | 68.7 | 7,140 * |
| 105 | 59.6 | 8,090 | 62.0 | 8,420 | 62.0 | 8,240 | 65.1 | 8,880 | 115 | 60.8 | 7,050 | 64.5 | 7,730 | 62.7 | 7,140 | 67.0 | 6,940 * |
| 110 | 57.9 | 7,450 | 60.2 | 7,730 | 60.4 | 7,580 | 63.4 | 8,170 | 120 | 59.2 | 6,500 | 62.8 | 7,140 | 61.2 | 6,590 | 65.5 | 6,790 * |
| 115 | 55.9 | 6,810 | 58.2 | 7,070 | 58.6 | 6,940 | 61.5 | 7,490 | 125 | 57.6 | 6,010 | 61.1 | 6,610 | 59.7 | 6,080 | 63.9 | 6,610 * |
| 120 | 54.1 | 6,280 | 56.3 | 6,520 | 56.9 | 6,410 | 59.8 | 6,920 | 130 | 55.9 | 5,550 | 59.4 | 6,100 | 58.1 | 5,620 | 62.3 | 6,280 |
| 125 | 52.2 | 5,770 | 54.4 | 5,990 | 55.1 | 5,900 | 58.0 | 6,390 | 135 | 54.2 | 5,130 | 57.6 | 5,640 | 56.5 | 5,180 | 60.7 | 5,820 |
| 130 | 50.3 | 5,330 | 52.4 | 5,530 | 53.3 | 5,440 | 56.1 | 5,900 | 140 | 52.4 | 4,670 | 55.7 | 5,200 | 54.8 | 4,760 | 58.9 | 5,350 |
| 135 | 48.2 | 4,890 | | | 51.5 | 5,020 | 54.2 | 5,440 | 145 | 50.6 | 4,250 | 53.8 | 4,800 | 53.2 | 4,320 | 57.1 | 4,960 |
| 140 | 46.0 | 4,400 | | | 49.5 | 4,560 | 52.1 | 5,000 | 150 | 48.7 | 3,850 | 51.9 | 4,430 | 51.5 | 3,920 | 55.4 | 4,580 |
| 145 | 43.9 | 4,010 | | | 47.5 | 4,140 | | | 155 | 46.8 | 3,480 | | | 49.7 | 3,540 | 53.6 | 4,230 |
| 150 | 41.6 | 3,610 | | | 45.5 | 3,740 | | | 160 | 44.8 | 3,100 | | | 47.8 | 3,170 | 51.5 | 3,810 |
| 155 | 39.3 | 3,260 | | | 43.4 | 3,370 | | | 165 | 42.7 | 2,790 | | | 46.0 | 2,860 | | |
| 160 | 36.6 | 2,910 | | | 41.1 | 3,020 | | | 170 | | | | | 44.1 | 2,550 | | |
| 165 | 33.9 | 2,600 | | | 38.8 | 2,710 | | | | | | | | | | | |

| 170' Boom | | | | | | | | | 170' Boom | | | | | | | | |
|----------------------|----------------------|----------------------|----------------------|----------------------|----------------------|----------------------|----------------------|----------------------|----------------------|----------------------|----------------------|----------------------|----------------------|----------------------|----------------------|----------------------|----------------------|
| | | | 30' Jib | | | 40' Jib | | | | | | 50' Jib | | | 60' Jib | | |
| Load Radius (ft.) | 10° Offset | | 30° Offset | | 10° Offset | | 30° Offset | | Load Radius (ft.) | 10° Offset | | 30° Offset | | 10° Offset | | 30° Offset | |
| | Boom Angle (deg.) | Rated Load (lbs.) | Boom Angle (deg.) | Rated Load (lbs.) | Boom Angle (deg.) | Rated Load (lbs.) | Boom Angle (deg.) | Rated Load (lbs.) | | Boom Angle (deg.) | Rated Load (lbs.) | Boom Angle (deg.) | Rated Load (lbs.) | Boom Angle (deg.) | Rated Load (lbs.) | Boom Angle (deg.) | Rated Load (lbs.) |
| 45 | 79.8 | 23,360 * | | | | | | | 55 | 79.2 | 18,500 * | | | 80.0 | 17,000 * | | |
| 50 | 78.3 | 22,830 * | | | 79.6 | 20,800 * | | | 60 | 77.9 | 17,800 * | | | 78.8 | 16,400 * | | |
| 55 | 76.8 | 22,150 | 79.4 | 19,860 * | 78.1 | 20,000 * | | | 65 | 76.5 | 17,100 * | | | 77.5 | 15,800 * | | |
| 60 | 75.3 | 19,550 | 77.9 | 19,220 * | 76.7 | 19,200 * | 80.0 | 15,290 * | 70 | 75.2 | 15,980 | 79.1 | 11,170 * | 76.2 | 15,200 * | | |
| 65 | 73.8 | 17,370 | 76.4 | 18,120 | 75.3 | 17,630 | 78.6 | 14,770 * | 75 | 73.8 | 14,280 | 77.6 | 10,800 * | 74.9 | 13,980 * | 79.4 | 8,900 * |
| 70 | 72.4 | 15,560 | 74.9 | 16,220 | 73.9 | 15,800 | 77.1 | 14,300 * | 80 | 72.4 | 12,940 | 76.2 | 10,490 * | 73.6 | 13,050 | 78.1 | 8,610 * |
| 75 | 70.8 | 13,880 | 73.2 | 14,500 | 72.4 | 14,130 | 75.6 | 13,840 * | 85 | 71.0 | 11,750 | 74.8 | 10,180 * | 72.3 | 11,860 | 76.7 | 8,350 * |
| 80 | 69.3 | 12,560 | 71.7 | 13,090 | 71.0 | 12,760 | 74.1 | 13,420 * | 90 | 69.6 | 10,690 | 73.4 | 9,890 * | 71.0 | 10,800 | 75.4 | 8,110 * |
| 85 | 67.7 | 11,390 | 70.1 | 11,880 | 69.5 | 11,590 | 72.6 | 12,450 | 95 | 68.2 | 9,720 | 71.9 | 9,610 * | 69.5 | 9,810 | 73.9 | 7,870 * |
| 90 | 66.2 | 10,360 | 68.6 | 10,820 | 68.1 | 10,560 | 71.1 | 11,370 | 100 | 66.7 | 8,880 | 70.4 | 9,360 * | 68.2 | 8,970 | 72.5 | 7,640 * |
| 95 | 64.5 | 9,390 | 66.9 | 9,810 | 66.5 | 9,560 | 69.5 | 10,330 | 105 | 65.3 | 8,150 | 68.9 | 8,970 | 66.8 | 8,220 | 71.1 | 7,450 * |
| 100 | 62.9 | 8,590 | 65.2 | 8,970 | 65.0 | 8,750 | 68.0 | 9,470 | 110 | 63.9 | 7,470 | 67.4 | 8,240 | 65.5 | 7,560 | 69.7 | 7,250 * |
| 105 | 61.3 | 7,870 | 63.6 | 8,220 | 63.5 | 8,020 | 66.4 | 8,680 | 115 | 62.3 | 6,830 | 65.8 | 7,560 | 64.0 | 6,920 | 68.2 | 7,050 * |
| 110 | 59.7 | 7,200 | 61.9 | 7,530 | 61.9 | 7,360 | 64.8 | 8,000 | 120 | 60.8 | 6,280 | 64.3 | 6,960 | 62.6 | 6,340 | 66.7 | 6,900 * |
| 115 | 57.9 | 6,560 | 60.1 | 6,870 | 60.3 | 6,720 | 63.1 | 7,310 | 125 | 59.3 | 5,770 | 62.7 | 6,410 | 61.1 | 5,860 | 65.2 | 6,610 |
| 120 | 56.2 | 6,040 | 58.3 | 6,300 | 58.7 | 6,170 | 61.5 | 6,720 | 130 | 57.7 | 5,310 | 61.1 | 5,930 | 59.7 | 5,370 | 63.7 | 6,100 |
| 125 | 54.4 | 5,550 | 56.5 | 5,790 | 57.0 | 5,680 | 59.8 | 6,190 | 135 | 56.1 | 4,870 | 59.5 | 5,460 | 58.2 | 4,960 | 62.2 | 5,640 |
| 130 | 52.6 | 5,070 | 54.7 | 5,310 | 55.4 | 5,220 | 58.1 | 5,700 | 140 | 54.4 | 4,360 | 57.7 | 5,000 | 56.6 | 4,450 | 60.5 | 5,180 |
| 135 | 50.8 | 4,560 | 52.8 | 4,850 | 53.7 | 4,730 | 56.4 | 5,260 | 145 | 52.8 | 3,920 | 56.0 | 4,620 | 55.1 | 4,010 | 58.9 | 4,780 |
| 140 | 48.8 | 4,070 | | | 51.8 | 4,230 | 54.4 | 4,820 | 150 | 51.1 | 3,520 | 54.2 | 4,160 | 53.5 | 3,610 | 57.3 | 4,380 |
| 145 | 46.9 | 3,650 | | | 50.1 | 3,810 | 52.6 | 4,360 | 155 | 49.3 | 3,150 | 52.4 | 3,760 | 51.9 | 3,240 | 55.6 | 3,960 |
| 150 | 44.8 | 3,280 | | | 48.2 | 3,410 | | | 160 | 47.4 | 2,790 | | | 50.2 | 2,860 | 53.8 | 3,540 |
| 155 | 42.7 | 2,930 | | | 46.3 | 3,060 | | | 165 | | | | | 48.5 | 2,530 | 52.0 | 3,170 |
| 160 | 40.4 | 2,570 | | | 44.2 | 2,680 | | | | | | | | | | | |

CK850-III Jib Rated Loads in Pounds

2 Counterweights + 2 Low Weights - Crawlers fully extended

| 180' Boom | | | | | | | | | 180' Boom | | | | | | | | |
|-------------------|-------------------|-------------------|-------------------|-------------------|-------------------|-------------------|-------------------|-------------------|-------------------|-------------------|-------------------|-------------------|-------------------|-------------------|-------------------|-------------------|---------|
| 30' Jib | | | | | 40' Jib | | | | 50' Jib | | | | | 60' Jib | | | |
| 10° Offset | | 30° Offset | | 10° Offset | | 30° Offset | | Load Radius (ft.) | 10° Offset | | 30° Offset | | 10° Offset | | 30° Offset | | |
| Load Angle (deg.) | Rated Load (lbs.) | Boom Angle (deg.) | Rated Load (lbs.) | Load Angle (deg.) | Boom Angle (deg.) | Rated Load (lbs.) | Boom Angle (deg.) | | Load Angle (deg.) | Rated Load (lbs.) | Load Angle (deg.) | Rated Load (lbs.) | Load Angle (deg.) | Rated Load (lbs.) | Load Angle (deg.) | Rated Load (lbs.) | |
| 50 | 78.9 | 19,770 * | | | | | | 55 | 79.7 | 17,000 * | | | | | | | |
| 55 | 77.4 | 19,240 * | 79.9 | 19,060 * | 78.7 | 18,500 * | | 60 | 78.4 | 16,400 * | | | 79.3 | 15,000 * | | | |
| 60 | 76.0 | 18,760 * | 78.5 | 18,580 * | 77.3 | 17,800 * | | 65 | 77.1 | 15,800 * | | | 78.0 | 14,500 * | | | |
| 65 | 74.6 | 17,190 | 77.1 | 17,960 | 76.0 | 17,100 * | 79.1 | 14,740 * | 70 | 75.9 | 15,200 * | 79.6 | 11,300 * | 76.8 | 14,000 * | | |
| 70 | 73.2 | 15,360 | 75.6 | 16,070 | 74.7 | 15,630 | 77.7 | 14,460 * | 75 | 74.5 | 13,980 * | 78.2 | 10,930 * | 75.5 | 13,500 * | 79.9 | 8,990 * |
| 75 | 71.7 | 13,710 | 74.1 | 14,350 | 73.2 | 13,950 | 76.3 | 14,020 * | 80 | 73.2 | 12,760 | 76.9 | 10,600 * | 74.3 | 12,870 | 78.6 | 8,700 * |
| 80 | 70.3 | 12,360 | 72.6 | 12,940 | 71.9 | 12,580 | 74.9 | 13,580 | 85 | 71.9 | 11,570 | 75.5 | 10,310 * | 73.0 | 11,680 | 77.3 | 8,460 * |
| 85 | 68.8 | 11,190 | 71.2 | 11,720 | 70.5 | 11,410 | 73.5 | 12,320 | 90 | 70.6 | 10,510 | 74.2 | 10,030 * | 71.8 | 10,620 | 76.0 | 8,200 * |
| 90 | 67.4 | 10,180 | 69.7 | 10,640 | 69.1 | 10,360 | 72.1 | 11,220 | 95 | 69.2 | 9,520 | 72.7 | 9,740 * | 70.4 | 9,630 | 74.6 | 7,950 * |
| 95 | 65.8 | 9,190 | 68.1 | 9,630 | 67.6 | 9,390 | 70.5 | 10,180 | 100 | 67.8 | 8,700 | 71.4 | 9,500 * | 69.2 | 8,790 | 73.3 | 7,760 * |
| 100 | 64.3 | 8,390 | 66.5 | 8,790 | 66.2 | 8,570 | 69.1 | 9,320 | 105 | 66.5 | 7,950 | 70.0 | 8,810 | 67.9 | 8,040 | 72.0 | 7,530 * |
| 105 | 62.8 | 7,670 | 65.0 | 8,040 | 64.8 | 7,820 | 67.6 | 8,550 | 110 | 65.1 | 7,290 | 68.5 | 8,110 | 66.6 | 7,360 | 70.7 | 7,360 * |
| 110 | 61.3 | 7,010 | 63.4 | 7,360 | 63.3 | 7,160 | 66.1 | 7,840 | 115 | 63.6 | 6,630 | 67.0 | 7,400 | 65.2 | 6,720 | 69.2 | 7,160 * |
| 115 | 59.6 | 6,370 | 61.7 | 6,670 | 61.8 | 6,520 | 64.5 | 7,160 | 120 | 62.2 | 6,080 | 65.6 | 6,810 | 63.8 | 6,170 | 67.8 | 7,010 * |
| 120 | 58.0 | 5,840 | 60.1 | 6,120 | 60.3 | 5,970 | 63.0 | 6,560 | 125 | 60.8 | 5,570 | 64.1 | 6,260 | 62.5 | 5,660 | 66.4 | 6,480 |
| 125 | 56.4 | 5,310 | 58.4 | 5,590 | 58.8 | 5,460 | 61.4 | 6,040 | 130 | 59.3 | 5,090 | 62.6 | 5,770 | 61.1 | 5,180 | 65.0 | 5,970 |
| 130 | 54.7 | 4,780 | 56.7 | 5,110 | 57.2 | 4,960 | 59.8 | 5,550 | 135 | 57.8 | 4,580 | 61.1 | 5,310 | 59.7 | 4,670 | 63.6 | 5,480 |
| 135 | 53.0 | 4,270 | 55.0 | 4,580 | 55.6 | 4,450 | 58.2 | 5,090 | 140 | 56.2 | 4,070 | 59.4 | 4,850 | 58.2 | 4,160 | 62.0 | 5,020 |
| 140 | 51.2 | 3,790 | 53.1 | 4,070 | 53.9 | 3,940 | 56.4 | 4,580 | 145 | 54.7 | 3,630 | 57.8 | 4,380 | 56.8 | 3,720 | 60.5 | 4,620 |
| 145 | 49.4 | 3,370 | 51.3 | 3,610 | 52.3 | 3,520 | 54.7 | 4,120 | 150 | 53.1 | 3,240 | 56.2 | 3,940 | 55.3 | 3,320 | 59.0 | 4,160 |
| 150 | 47.6 | 2,970 | | | 50.6 | 3,130 | 53.0 | 3,680 | 155 | 51.5 | 2,860 | 54.5 | 3,520 | 53.8 | 2,930 | 57.5 | 3,740 |
| 155 | 45.7 | 2,600 | | | 48.8 | 2,750 | | | 160 | | | 52.7 | 3,100 | 52.2 | 2,550 | 55.8 | 3,320 |
| | | | | | | | | | 165 | | | | | | | 54.1 | 2,950 |
| | | | | | | | | | 170 | | | | | | | 52.4 | 2,600 |

Boom:

Welded lattice construction using tubular, high-tensile steel

Chords with pin connections between sections.

Basic boom length: 40 ft (12.2 m)

Max. boom length: 70 ft (21.3 m)

Limit on clamshell bucket weight: 4,600 lb (2,100 kg)

Optional tagline: hydraulic operated type and spring type

Boom Component Chart

| Boom length ft (m) | Boom arrangement |
|--------------------|--------------------------|
| 40 (12.2) | Base-Tip |
| 50 (15.2) | Base-A-Tip |
| 60 (18.3) | Base-A-A-Tip, Base-B-Tip |
| 70 (21.3) | Base-A-B-Tip |

Base = Boom Base

Insert: A = 10 ft (3.05 m)

B = 20 ft (6.10 m)

C = 40 ft (12.2 m)

Tip = Boom Tip

- Figures represent maximum allowable capacity, and assume level, ground and ideal working conc
- Capacities are calculated at 66 % of the minimum tipping loads.
- Capacities are maximum recommended by PCSA Standard #4. Allowances must be made by the user for such unfavorable conditions as a sort of uneven supporting surface, rapid cycle operations, or bucket suction.
- The combined weight of the bucket and load must not exceed these capacities.
- Boom length for clamshell operation should not exceed 70 ft (21.3 m).

CK850-III Clamshell Capacity in Pounds

1 Counterweight only, No Low Weight - Crawlers fully extended

| Load Radius (ft) | 40' Boom | | 50' Boom | | Load Radius (ft) | 60' Boom | | 70' Boom | |
|------------------------|-------------------------|------------------------|-------------------------|------------------------|------------------------|-------------------------|------------------------|-------------------------|------------------------|
| | Boom Angle (deg.) | Rated Load (lbs) | Boom Angle (deg.) | Rated Load (lbs) | | Boom Angle (deg.) | Rated Load (lbs) | Boom Angle (deg.) | Rated Load (lbs) |
| 22.0 | 63.6 | 16,000 * | | | 30.0 | 64.5 | 16,000 * | | |
| 24.0 | 60.3 | 16,000 * | | | 32.0 | 62.4 | 16,000 * | | |
| 26.0 | 56.9 | 16,000 * | 64.2 | 16,000 * | 34.0 | 60.2 | 16,000 * | 64.8 | 16,000 * |
| 28.0 | 53.4 | 16,000 * | 61.6 | 16,000 * | 36.0 | 58.0 | 16,000 * | 63.0 | 16,000 * |
| 30.0 | 49.7 | 16,000 * | 58.9 | 16,000 * | 38.0 | 55.7 | 16,000 * | 61.1 | 16,000 * |
| 32.0 | 45.7 | 16,000 * | 56.2 | 16,000 * | 40.0 | 53.3 | 16,000 * | 59.2 | 16,000 * |
| 34.0 | 41.5 | 16,000 * | 53.3 | 16,000 * | 42.0 | 50.9 | 16,000 * | 57.3 | 16,000 * |
| 36.0 | 36.9 | 16,000 * | 50.4 | 16,000 * | 44.0 | 48.3 | 16,000 * | 55.3 | 15,800 * |
| 38.0 | 31.6 | 16,000 * | 47.3 | 16,000 * | 46.0 | 45.7 | 16,000 * | 53.3 | 15,600 * |
| 40.0 | 25.5 | 16,000 * | 44.1 | 16,000 * | 48.0 | 42.9 | 15,200 * | 51.2 | 15,200 * |
| 42.0 | | | 40.6 | 16,000 * | 50.0 | 40.0 | 14,500 * | 49.0 | 14,300 * |
| 44.0 | | | 36.9 | 16,000 * | 52.0 | 36.9 | 13,600 | 46.8 | 13,600 * |
| 46.0 | | | 32.8 | 16,000 * | 54.0 | 33.5 | 13,000 | 44.5 | 13,000 * |
| 48.0 | | | 28.2 | 15,400 * | 56.0 | 29.8 | 12,300 | 42.1 | 12,300 * |
| | | | | | 58.0 | 25.6 | 11,900 | 39.6 | 11,600 * |
| | | | | | 60.0 | | | 36.9 | 11,200 * |
| | | | | | 62.0 | | | 34.0 | 10,800 * |
| | | | | | 64.0 | | | 30.9 | 10,100 * |
| | | | | | 66.0 | | | 27.5 | 9,700 * |

CK850-III

Note: Due to our policy of continual product improvement, all designs and specifications are subject to change without advance notice. Pictures inside this publication may show machines with optional equipment. This manual and the specifications herein were prepared for the market served by Kobelco Cranes North America Inc., including North America and Latin America. Kobelco product specifications in other world markets may differ.

KOBELCO CRANES CO., LTD
Oval Court Ohsaki Mark West Bldg., 17-1, Higashigotanda 2-chome,
Shinagawa-ku, Tokyo, 141-8626 JAPAN
Tel: +81 (0) 3-5789-2130 Fax: +81 (0) 3-5789-3372

KOBELCO CRANES NORTH AMERICA INC.
10845 Train Court
Houston Texas 77041 U.S.A
Tel: 713-856-5755 Fax: 713-856-9072
www.kobelcocranesnorthamerica.com